




National Inspection Services
: 161659 on 01/29/2019
VIN: 1UYVS25375M413310 Unit: 20233

Commercial Credit Group, Inc Mark Wenzel
227 w trade st Charlotte, NC 28202 USA
(704) 414-2456

2005 UTILITY REEFER

REEFER Specifications	
Axles	Tandem 20,000 Front / 20,000 Rear
Spread Axle	No
Frame Type	Steel
Suspension	Air Ride
Tire Size F	295/75R22.5
Tire Size R	295/75R22.5
Wheels	Steel
Reefer Type	Diesel
Reefer Make	Carrier
Reefer Model	X2 2500 A
Electric Standby	Yes
Rear Door	Swing 98 x 106
Interior Height	106"
Exterior	120"H 102"W 53'L
Exterior Color	WHITE

Drive Options

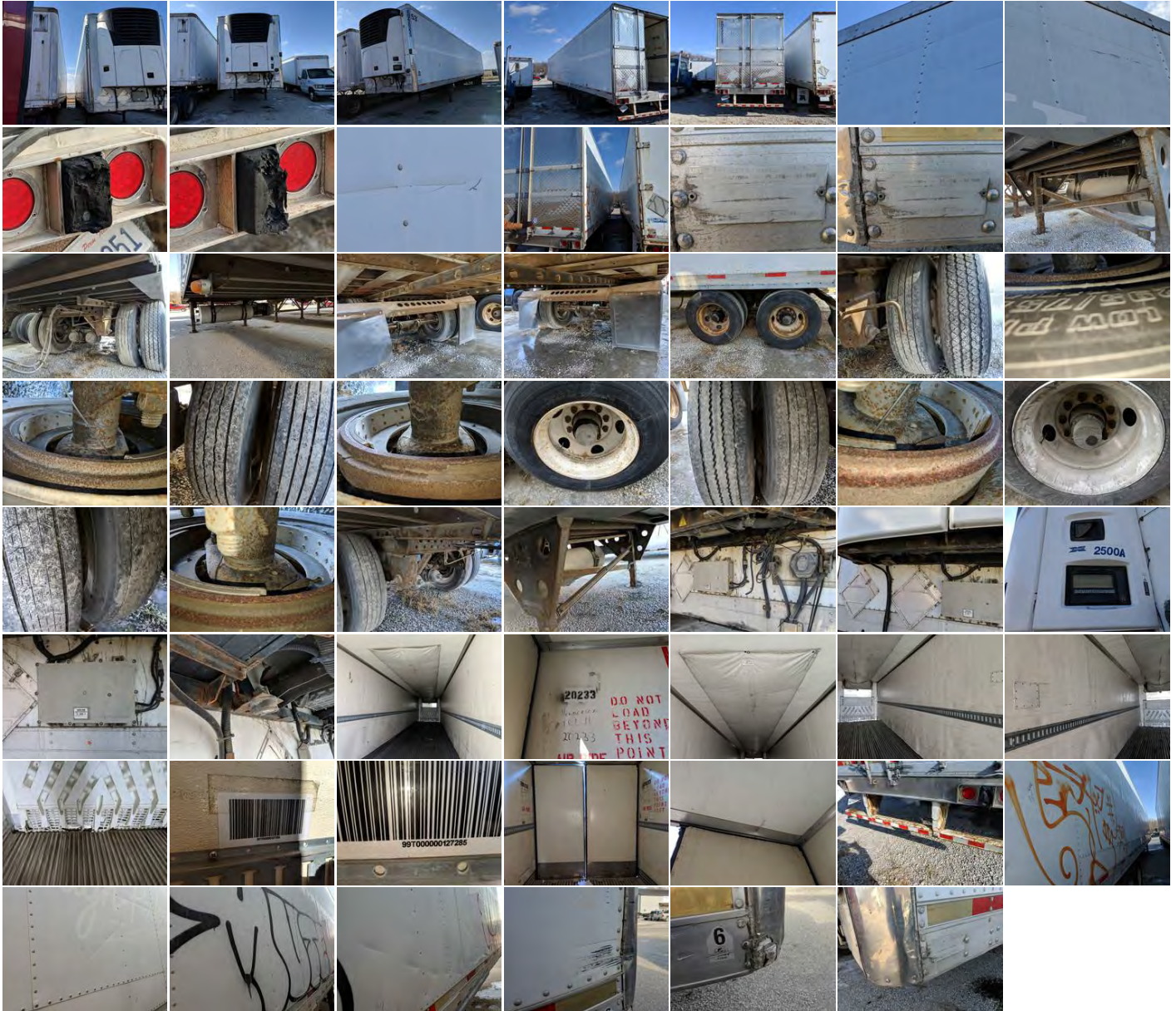
Inspection Photos

Notes / Description



National Inspection Services
: 161659 on 01/29/2019
VIN: 1UYVS25375M413310 Unit: 20233

Commercial Credit Group, Inc Mark Wenzel
227 w trade st Charlotte, NC 28202 USA
(704) 414-2456

2005 UTILITY REEFER PHOTOS





National Inspection Services
 # : 161659 on 01/29/2019
 VIN: 1UYVS25375M413310 Unit: 20233

Commercial Credit Group, Inc Mark Wenzel
 227 w trade st Charlotte, NC 28202 USA
 (704) 414-2456

2005 UTILITY REEFER

Brakes	
14	14
16	16
Additional Brake Detail	

Tires			
Front 295/75R22.5	/ 32	/ 32	Rear 295/75R22.5
Bridgestone 9 / 32 Steel	Bridgestone 8 / 32 Steel	Continental 5 / 32 Steel	Michelin 5 / 32 Steel
Michelin 8 / 32 Steel	Goodyear 11 / 32 Steel	Michelin 5 / 32 Steel	Goodyear 9 / 32 Steel
Additional Tire Detail			
TIRES WERE VARIOUS SIZES			

General Observations						
Oil Milky?	Oil Leaks?	NA	Water Leaks?	NA	Oil in Coolant?	NA
Clutch Play?	NA	Starts?	NA	Drives?	NA	
Safety / Operational Observations						
Lights Work?	See Notes	Wipers Work?	NA	Gauges Work?	NA	City Horn Works?
Air Horn Works?	NA					
Additional Observation Detail						
TRAILER HAS BEEN SITTING AND THERE WAS NO POWER TO THE REEFER. NO ASSISTANCE AVAILABLE. NO POWER TO CHECK LIGHTS.						

Wear and Tear Items	
INTERIOR WALLS	FRONT PANEL DAMAGED, R/S HAD SMALL HOLE IN THE INTERIOR WALL BUT NOT THE OUTSIDE WALL
REAR BUMPER	RUSTED
RUBBER STOPS	WORN
EXTERIOR	R/S HAD GRAFFITI AND FRONT CORNER SCRAPED AND DENTED
PAINT	SMALL SCRATCHES AND DENTS
WHEELS	RUSTED
INTERIOR	ROOF DAMAGED AT REAR
MUD FLAPS	RIGHT SIDE OF HANGER BAR BENT
REAR DOOR	LEFT SIDE OUTER PANEL DAMAGED
BODY	PANELS SCRATCHED, CREASED AND SEVERAL PANELS PATCHED

Condition report only. National Inspection Services does not guarantee mechanical reliability.

REPORT WAS PREPARED BY A THIRD PARTY. ALL EQUIPMENT PHOTOGRAPHS ON THIS REPORT DEPICT USED EQUIPMENT AND ("SELLER") DOES NOT ASSERT THEIR ACCURACY OR COMPLETENESS. SELLER IS NOT A MANUFACTURER, DEALER OR SERVICER OF EQUIPMENT. PHYSICAL INSPECTION OF THE USED EQUIPMENT DEPICTED HEREIN IS ENCOURAGED, AND ANY PURCHASING DECISIONS SHOULD BE BASED UPON SUCH ACTUAL INSPECTION THEREOF AS THE INTERESTED PERSON DEEMS APPROPRIATE. SELLER MAKES NO REPRESENTATIONS OR WARRANTIES WHATSOEVER. THE PROPERTY IS SOLD "AS IS" AND "WHERE IS", AND SELLER MAKES NO REPRESENTATION OR WARRANTY, EXPRESS OR IMPLIED, WITH RESPECT TO ANY MATTER WHATSOEVER, INCLUDING, WITHOUT LIMITATION, TITLE, THE CONDITION OF THE PROPERTY, ITS MERCHANTABILITY OR ITS FITNESS FOR ANY PARTICULAR PURPOSE. SELLER SPECIFICALLY DISCLAIMS ANY SUCH REPRESENTATIONS AND WARRANTIES. SELLER IS NOT A MANUFACTURER OR DEALER OF THE PROPERTY. THE FOREGOING TERMS AND CONDITIONS OF SALE AND DISCLAIMER CANNOT BE MODIFIED OR TERMINATED ORALLY. ONLY A WRITTEN INSTRUMENT, SIGNED BY AN OFFICER OF SELLER, SHALL BE EFFECTIVE TO MODIFY OR TERMINATE ANY PROVISIONS THERE OF BUT ONLY TO THE EXTENT SPECIFICALLY SET FORTH THEREIN.