



National Inspection Services
 # : 161623 on 01/25/2019
 VIN: 4V4NC9EJ6FN911596

Commercial Credit Group, Inc Mark Wenzel
 227 w trade st Charlotte, NC 28202 USA
 (704) 414-2456

2015 VOLVO VNL

VNL Specifications	
Mileage	540,465 / 540,465 ECM
Engine Hours	16166
Engine	Volvo D13 500 HP
Engine Brake	Yes
Engine Serial	1070066
Fuel	Diesel 2 Alum Tanks 200 Gal. Total
Exhaust	Single
Transmission	Volvo Auto ATO2612D 12 Spd
Rear	Meritor
Axles	Tandem 13,200 Front / 40,000 Rear
GVWR (lbs)	53,200
Frame Type	Steel
Suspension	Air Ride
Tire Size F	295/75R22.5
Tire Size R	295/75R22.5
Wheels	Aluminum
5th Wheel	Air Slide
A/C	Yes * See Notes
Aux Power Unit	No
Sleeper Size	61"
Dual Bunks	Yes
Interior Color	TAN
Radio Config	AM/FM/CD * Operational
Power Mirrors	Dual Power
Hi Back Seats	Dual
Pass Seat	Air Ride
Exterior Color	RED
Bumper	Painted
Heated Mirrors	Yes
Fairings	Full
External Visor	Yes

Drive Options
Overdrive, Cruise Control, Power Steering

Inspection Photos



Notes / Description

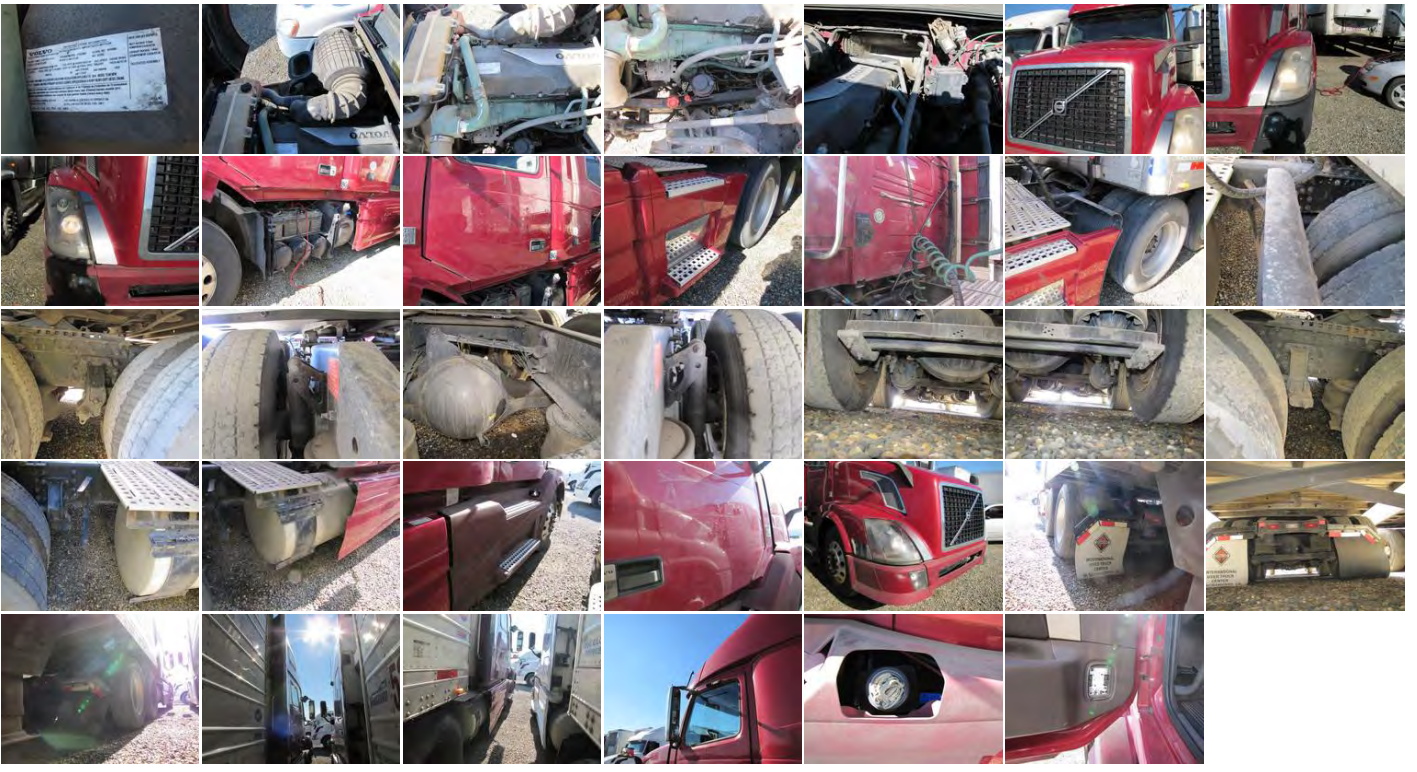


National Inspection Services
: 161623 on 01/25/2019
VIN: 4V4NC9EJ6FN911596

Commercial Credit Group, Inc Mark Wenzel
227 w trade st Charlotte, NC 28202 USA
(704) 414-2456

2015 VOLVO VNL PHOTOS







National Inspection Services
 # : 161623 on 01/25/2019
 VIN: 4V4NC9EJ6FN911596

Commercial Credit Group, Inc Mark Wenzel
 227 w trade st Charlotte, NC 28202 USA
 (704) 414-2456

2015 VOLVO VNL

Brakes	
18	19
19	14
Additional Brake Detail	
Disc on front axle	

Tires			
Front 295/75R22.5	11 / 32 Aluminum	Goodyear 10 / 32 Aluminum	Rear 295/75R22.5
Yokohama 7 / 32 Aluminum	Yokohama 2 / 32 Aluminum	Yokohama 3 / 32 Aluminum	Yokohama 3 / 32 Aluminum
Yokohama 5 / 32 Aluminum	Yokohama 2 / 32 Aluminum	Yokohama 1 / 32 Aluminum	Yokohama Aluminum
Additional Tire Detail			
FrontLeft=DoubleCoin			

General Observations						
Oil Milky? No	Oil Leaks? Yes	Water Leaks? No	Oil in Coolant? No	Clutch Play? NA	Starts? No	Drives? No
Safety / Operational Observations						
Lights Work? Yes - All	Wipers Work? Yes	Gauges Work? See Notes	City Horn Works? Yes	Air Horn Works? See Notes		
Additional Observation Detail						
Batteries dead, jump attempted but would not start. Could not perform operational checklist. Seepage at pan / rear seal.						

Wear and Tear Items	
Diagnostics	Engine ECU SA 16 DTC - - -, Transmission ECU SA 24 DTC - - -, brake ECU MID 136 SID - - - FMI 2, ECU MID 144 PSID - - - FMI 5, light control MID 216 PSID - - - FMI 5, light control MID 216 ?PSID - - - FMI 5
Work lights	Not working
1/4 fender	Missing right side
Fairing	Right rear tank fairing missing rear section
Fairing	Both tank fairings unpainted
Driver's mirror	Bracket damaged
Driver's fuel tank	Cap missing
Driver's door	Light damaged
Mirror	Left side top mount damaged
Entry light	Missing left side
Rear differential	Residue noted

Headlights	Lenses dulled
Bumper	Right end cap not painted
Paint	Various chips and scratches

Condition report only. National Inspection Services does not guarantee mechanical reliability.

© 2019 National Inspection Services (NIS)
101 W. Shrader St. Liberty, MO 64068
www.nationalinspect.com

REPORT WAS PREPARED BY A THIRD PARTY. ALL EQUIPMENT PHOTOGRAPHS ON THIS REPORT DEPICT USED EQUIPMENT AND ("SELLER") DOES NOT ASSERT THEIR ACCURACY OR COMPLETENESS. SELLER IS NOT A MANUFACTURER, DEALER OR SERVICER OF EQUIPMENT. PHYSICAL INSPECTION OF THE USED EQUIPMENT DEPICTED HEREIN IS ENCOURAGED, AND ANY PURCHASING DECISIONS SHOULD BE BASED UPON SUCH ACTUAL INSPECTION THEREOF AS THE INTERESTED PERSON DEEMS APPROPRIATE. SELLER MAKES NO REPRESENTATIONS OR WARRANTIES WHATSOEVER. THE PROPERTY IS SOLD "AS IS" AND "WHERE IS", AND SELLER MAKES NO REPRESENTATION OR WARRANTY, EXPRESS OR IMPLIED, WITH RESPECT TO ANY MATTER WHATSOEVER, INCLUDING, WITHOUT LIMITATION, TITLE, THE CONDITION OF THE PROPERTY, ITS MERCHANTABILITY OR ITS FITNESS FOR ANY PARTICULAR PURPOSE. SELLER SPECIFICALLY DISCLAIMS ANY SUCH REPRESENTATIONS AND WARRANTIES. SELLER IS NOT A MANUFACTURER OR DEALER OF THE PROPERTY. THE FOREGOING TERMS AND CONDITIONS OF SALE AND DISCLAIMER CANNOT BE MODIFIED OR TERMINATED ORALLY. ONLY A WRITTEN INSTRUMENT, SIGNED BY AN OFFICER OF SELLER, SHALL BE EFFECTIVE TO MODIFY OR TERMINATE ANY PROVISIONS THERE OF BUT ONLY TO THE EXTENT SPECIFICALLY SET FORTH THEREIN.