



National Inspection Services
: 182770 on 04/03/2020
VIN: 1DW624KZEA0630420 Unit: 4868

Commercial Credit Group, Inc Mark Wenzel
227 w trade st Charlotte, NC 28202 USA
(704) 414-2456

2010 JOHN DEERE 624K

624K Specifications

Engine	John Deere 6.8L
Operating Hours	10038
Fuel	Diesel
Tire Size F	20.5R25
Tire Size R	20.5R25

Drive Options

--

Inspection Photos



Notes / Description

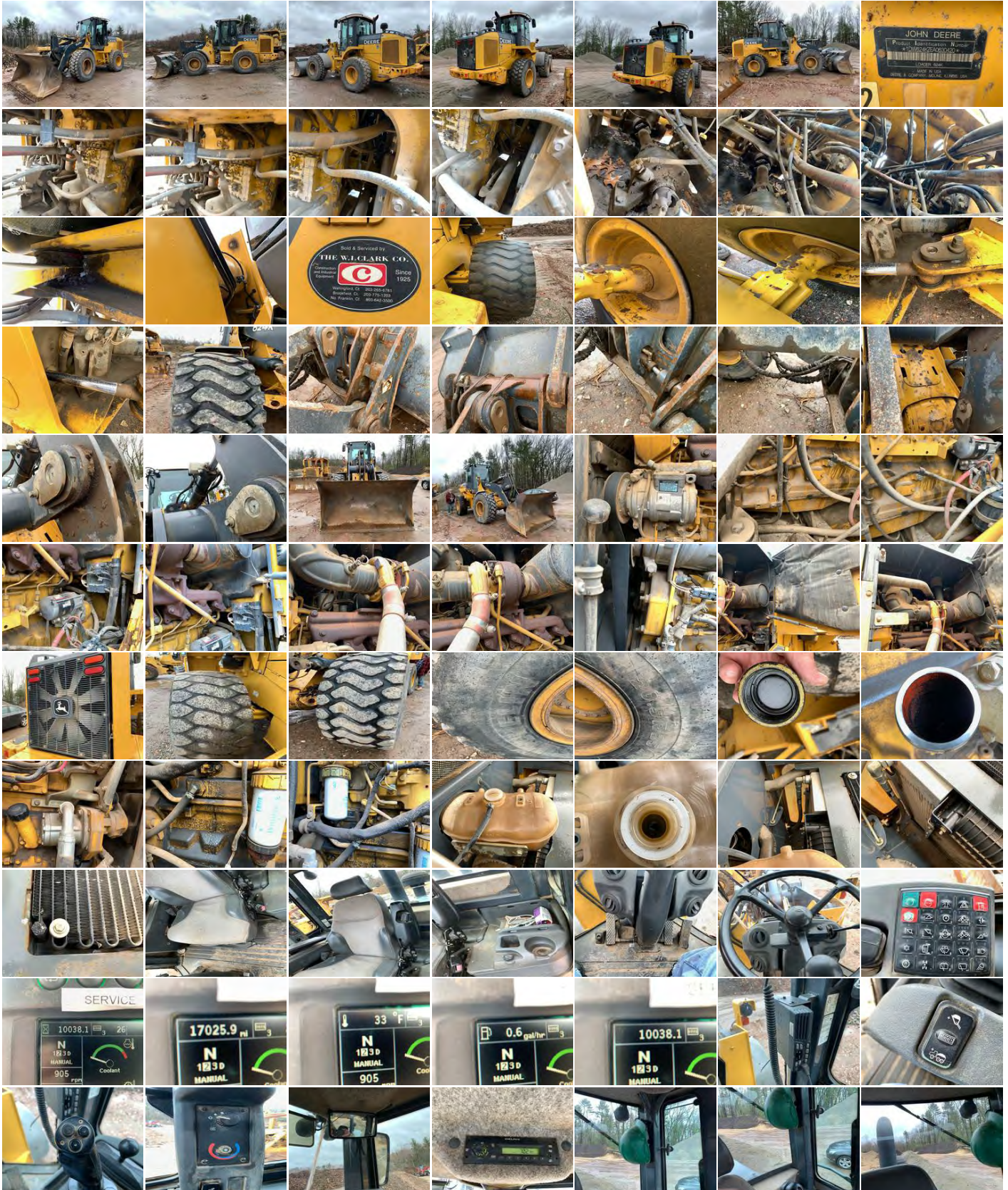
--

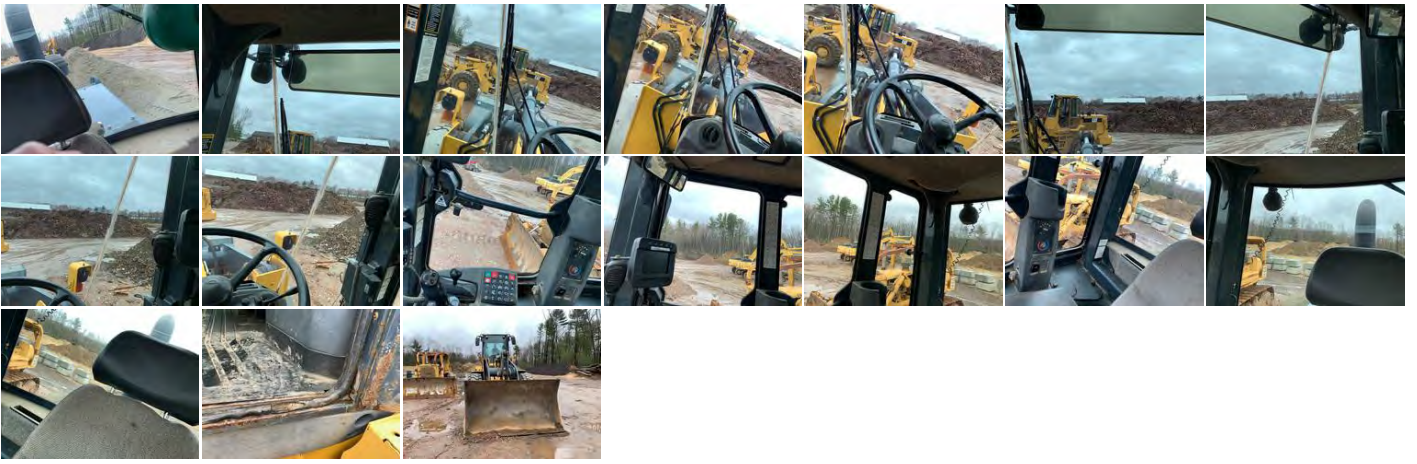


National Inspection Services
: 182770 on 04/03/2020
VIN: 1DW624KZEA0630420 Unit: 4868

Commercial Credit Group, Inc Mark Wenzel
227 w trade st Charlotte, NC 28202 USA
(704) 414-2456

2010 JOHN DEERE 624K PHOTOS







National Inspection Services
 # : 182770 on 04/03/2020
 VIN: 1DW624KZEA0630420 Unit: 4868

Commercial Credit Group, Inc Mark Wenzel
 227 w trade st Charlotte, NC 28202 USA
 (704) 414-2456

2010 JOHN DEERE 624K

Brakes	
N/A	N/A
N/A	N/A
Additional Brake Detail	
Hydrastatic	

Tires			
Front 20.5R25	Michelin / 32 Steel	Michelin / 32 Steel	Rear 20.5R25
Michelin Steel			Michelin Steel
Additional Tire Detail			
Off road tread, used condition			

General Observations						
Oil Milky? No	Oil Leaks? No	Water Leaks? No	Oil in Coolant? No	Clutch Play? NA	Starts? Yes	Drives? Yes
Safety / Operational Observations						
Lights Work? Yes - All	Wipers Work? Yes	Gauges Work? Yes - All	City Horn Works? NA	Air Horn Works? NA		
Additional Observation Detail						
Oil leak on the right side of the engine						

Wear and Tear Items	
HVAC	Temperature control knob broken off
Paint	Chips and scratches
Interior	Surfaces and upholstery are dirty
Seat	Upholstery is torn
Door	Weatherstripping is damaged
Steering	Right side articulating cylinder shaft is pitted
Bucket	Rust and minor damage

Condition report only. National Inspection Services does not guarantee mechanical reliability.

REPORT WAS PREPARED BY A THIRD PARTY. ALL EQUIPMENT PHOTOGRAPHS ON THIS REPORT DEPICT USED EQUIPMENT AND ("SELLER") DOES NOT ASSERT THEIR ACCURACY OR COMPLETENESS. SELLER IS NOT A MANUFACTURER, DEALER OR SERVICER OF EQUIPMENT. PHYSICAL INSPECTION OF THE USED EQUIPMENT DEPICTED HEREIN IS ENCOURAGED, AND ANY PURCHASING DECISIONS SHOULD BE BASED UPON SUCH ACTUAL INSPECTION THEREOF AS THE INTERESTED PERSON DEEMS APPROPRIATE. SELLER MAKES NO REPRESENTATIONS OR WARRANTIES WHATSOEVER. THE PROPERTY IS SOLD "AS IS" AND "WHERE IS", AND SELLER MAKES NO REPRESENTATION OR WARRANTY, EXPRESS OR IMPLIED, WITH RESPECT TO ANY MATTER WHATSOEVER, INCLUDING, WITHOUT LIMITATION, TITLE, THE CONDITION OF THE PROPERTY, ITS MERCHANTABILITY OR ITS FITNESS FOR ANY PARTICULAR PURPOSE. SELLER SPECIFICALLY DISCLAIMS ANY SUCH REPRESENTATIONS AND WARRANTIES. SELLER IS NOT A MANUFACTURER OR DEALER OF THE PROPERTY. THE FOREGOING TERMS AND CONDITIONS OF SALE AND DISCLAIMER CANNOT BE MODIFIED OR TERMINATED ORALLY. ONLY A WRITTEN INSTRUMENT, SIGNED BY AN OFFICER OF SELLER, SHALL BE EFFECTIVE TO MODIFY OR TERMINATE ANY PROVISIONS THERE OF BUT ONLY TO THE EXTENT SPECIFICALLY SET FORTH THEREIN.