



National Inspection Services  
# : 171360 on 07/31/2019  
VIN: 1JJV532W66L993206

Commercial Credit Group, Inc Mark Wenzel  
227 w trade st Charlotte, NC 28202 USA  
(704) 414-2456

## 2006 WABASH DRY VAN

DRY VAN Specifications	
Axles	Tandem 18,800 Front / 18,800 Rear
Spread Axle	No
Suspension	Air Ride
Tire Size F	275/80R22.5
Tire Size R	275/80R22.5
Wheels	Steel
Rear Door	Swing 96 X 112
Interior Height	111"
Exterior	162"H 102"W 53'L
Exterior Color	WHITE
Drive Options	

Inspection Photos

Notes / Description

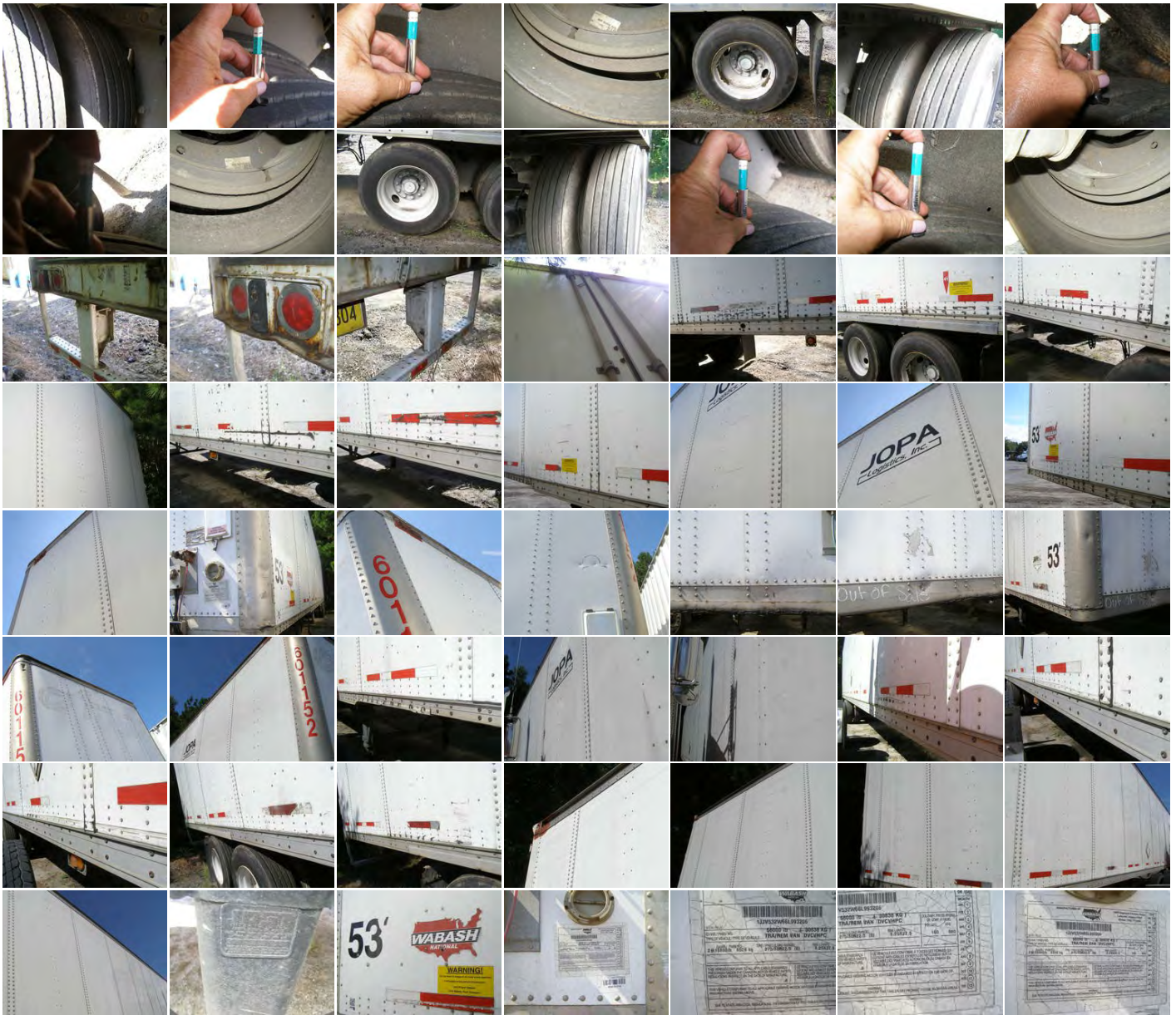


National Inspection Services  
# : 171360 on 07/31/2019  
VIN: 1JJV32W66L933206

Commercial Credit Group, Inc Mark Wenzel  
227 w trade st Charlotte, NC 28202 USA  
(704) 414-2456

## 2006 WABASH DRY VAN PHOTOS







National Inspection Services  
 # : 171360 on 07/31/2019  
 VIN: 1JJV32W66L933206

Commercial Credit Group, Inc Mark Wenzel  
 227 w trade st Charlotte, NC 28202 USA  
 (704) 414-2456

## 2006 WABASH DRY VAN

Brakes	
28	28
28	28
Additional Brake Detail	

Tires			
Front 275/80R22.5	/ 32	/ 32	Rear 275/80R22.5
Dunlop 9 / 32 Steel	Dunlop 11 / 32 Steel	Dunlop 8 / 32 Steel	Dunlop 18 / 32 Steel
Dunlop 13 / 32 Steel	Dunlop 13 / 32 Steel	Dunlop 14 / 32 Steel	Dunlop 13 / 32 Steel
Additional Tire Detail			

General Observations						
Oil Milky?	Oil Leaks?	NA	Water Leaks?	NA	Oil in Coolant?	NA
Clutch Play?	NA	Starts?	NA	Drives?	NA	
Safety / Operational Observations						
Lights Work?	See Notes	Wipers Work?	NA	Gauges Work?	NA	City Horn Works?
Air Horn Works?	NA					
Additional Observation Detail						
No power to check lights.						

Wear and Tear Items	
Interior	Wood panel added to roof and roof has been patched
Door hinge	Broken in rear door top
Dock bumpers	Damaged / worn
Body	Right vertical post damaged, lower front rail dented and top front rail damaged
Body	Panels creased, scratched and dented
Tires	2 below terms
Rear bumper	Rear bent around taillights

**REPORT WAS PREPARED BY A THIRD PARTY. ALL EQUIPMENT PHOTOGRAPHS ON THIS REPORT DEPICT USED EQUIPMENT AND ("SELLER") DOES NOT ASSERT THEIR ACCURACY OR COMPLETENESS. SELLER IS NOT A MANUFACTURER, DEALER OR SERVICER OF EQUIPMENT. PHYSICAL INSPECTION OF THE USED EQUIPMENT DEPICTED HEREIN IS ENCOURAGED, AND ANY PURCHASING DECISIONS SHOULD BE BASED UPON SUCH ACTUAL INSPECTION THEREOF AS THE INTERESTED PERSON DEEMS APPROPRIATE. SELLER MAKES NO REPRESENTATIONS OR WARRANTIES WHATSOEVER. THE PROPERTY IS SOLD "AS IS" AND "WHERE IS", AND SELLER MAKES NO REPRESENTATION OR WARRANTY, EXPRESS OR IMPLIED, WITH RESPECT TO ANY MATTER WHATSOEVER, INCLUDING, WITHOUT LIMITATION, TITLE, THE CONDITION OF THE PROPERTY, ITS MERCHANTABILITY OR ITS FITNESS FOR ANY PARTICULAR PURPOSE. SELLER SPECIFICALLY DISCLAIMS ANY SUCH REPRESENTATIONS AND WARRANTIES. SELLER IS NOT A MANUFACTURER OR DEALER OF THE PROPERTY. THE FOREGOING TERMS AND CONDITIONS OF SALE AND DISCLAIMER CANNOT BE MODIFIED OR TERMINATED ORALLY. ONLY A WRITTEN INSTRUMENT, SIGNED BY AN OFFICER OF SELLER, SHALL BE EFFECTIVE TO MODIFY OR TERMINATE ANY PROVISIONS THERE OF BUT ONLY TO THE EXTENT SPECIFICALLY SET FORTH THEREIN.**