



National Inspection Services  
 # : 171367 on 08/05/2019  
 VIN: 3HSDJAPR9GN222795 Unit: 751

Commercial Credit Group, Inc Mark Wenzel  
 227 w trade st Charlotte, NC 28202 USA  
 (704) 414-2456

## 2016 INTERNATIONAL PROSTAR

PROSTAR Specifications	
Mileage	232,448
Engine Hours	7632
Engine	Cummins ISX 425 HP
Engine Brake	Yes
Fuel	Diesel 2 Alum Tanks 200 Gal. Total
Exhaust	Horizontal
Transmission	Eaton Manual 10 Spd
Rear	Meritor
Axles	Tandem 12,000 Front / 40,000 Rear
GVWR (lbs)	52,000
Frame Type	Steel
Suspension	Air Ride
Wheelbase	226"
Tire Size F	11R22.5
Tire Size R	11R22.5
Wheels	Aluminum
5th Wheel	Air Slide
A/C	Yes * Operational
Sleeper Size	73"
Dual Bunks	Yes
Interior Color	GRAY
Radio Config	AM/FM/CD * Operational
Power Mirrors	Dual Power
Hi Back Seats	Dual
Pass Seat	Air Ride
Exterior Color	WHITE
Bumper	Plastic
Heated Mirrors	Yes
Fairings	Full
External Visor	Yes

Drive Options
Overdrive, Cruise Control, Power Steering

### Inspection Photos



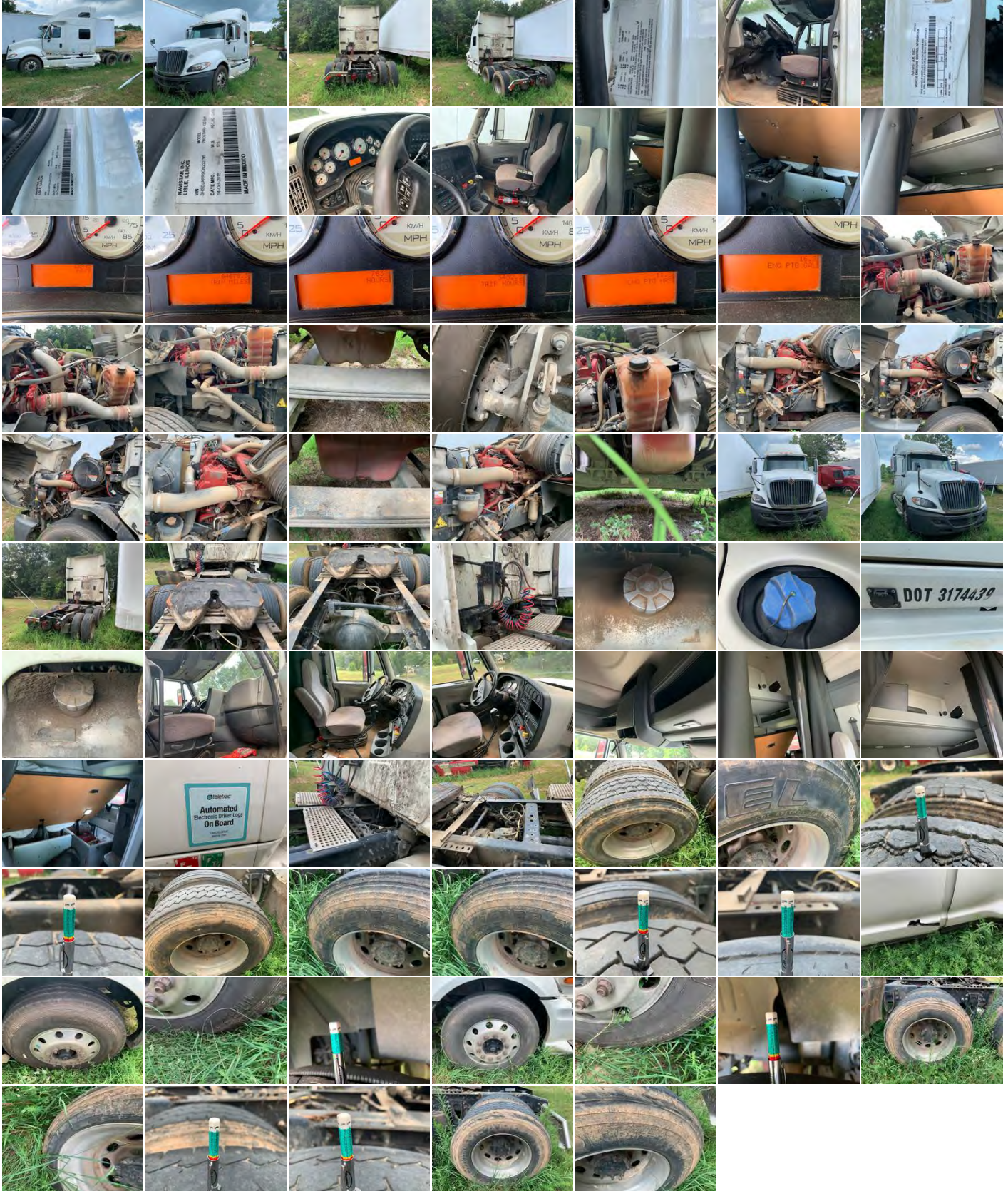
Notes / Description



National Inspection Services  
# : 171367 on 08/05/2019  
VIN: 3HSDJAPR9GN222795 Unit: 751

Commercial Credit Group, Inc Mark Wenzel  
227 w trade st Charlotte, NC 28202 USA  
(704) 414-2456

## 2016 INTERNATIONAL PROSTAR PHOTOS





National Inspection Services  
 # : 171367 on 08/05/2019  
 VIN: 3HSDJAPR9GN222795 Unit: 751

Commercial Credit Group, Inc Mark Wenzel  
 227 w trade st Charlotte, NC 28202 USA  
 (704) 414-2456

## 2016 INTERNATIONAL PROSTAR

Brakes	
17	15
17	19
18	18
Additional Brake Detail	

Tires			
Front 11R22.5	24 / 32 Aluminum	2 / 32 Aluminum	Rear 11R22.5
6 / 32 Aluminum	7 / 32 Aluminum	4 / 32 Aluminum	4 / 32 Aluminum
Goodyear 4 / 32 Aluminum	Goodyear 3 / 32 Aluminum	Goodyear 3 / 32 Aluminum	Goodyear 7 / 32 Aluminum
Additional Tire Detail			
BlackLion on the front and partial rear			

General Observations	
Oil Milky? No	Oil Leaks? No
Water Leaks? No	Oil in Coolant? No
Clutch Play? Ok	Starts? Yes
Drives? Yes	
Safety / Operational Observations	
Lights Work? Yes - All	Wipers Work? Yes
Gauges Work? Yes - All	City Horn Works? Yes
Air Horn Works? Yes	
Diesel Particulate Filter (DPF): <b>PASS</b>	
Additional Observation Detail	

Wear and Tear Items	
Fairings	Right side damaged at front, left side rear panels damaged
Cab extenders	Both sides damaged
Rust	Present on frame and rears
Tires	9 below terms
1/4 fenders	Damaged
Mud flap	Left flap missing right side hanger and flap missing
Power steering	Leaking
Paint	Various chips and scratches
Interior	Soiled

Condition report only. National Inspection Services does not guarantee mechanical reliability.

REPORT WAS PREPARED BY A THIRD PARTY. ALL EQUIPMENT PHOTOGRAPHS ON THIS REPORT DEPICT USED EQUIPMENT AND ("SELLER") DOES NOT ASSERT THEIR ACCURACY OR COMPLETENESS. SELLER IS NOT A MANUFACTURER, DEALER OR SERVICER OF EQUIPMENT. PHYSICAL INSPECTION OF THE USED EQUIPMENT DEPICTED HEREIN IS ENCOURAGED, AND ANY PURCHASING DECISIONS SHOULD BE BASED UPON SUCH ACTUAL INSPECTION THEREOF AS THE INTERESTED PERSON DEEMS APPROPRIATE. SELLER MAKES NO REPRESENTATIONS OR WARRANTIES WHATSOEVER. THE PROPERTY IS SOLD "AS IS" AND "WHERE IS", AND SELLER MAKES NO REPRESENTATION OR WARRANTY, EXPRESS OR IMPLIED, WITH RESPECT TO ANY MATTER WHATSOEVER, INCLUDING, WITHOUT LIMITATION, TITLE, THE CONDITION OF THE PROPERTY, ITS MERCHANTABILITY OR ITS FITNESS FOR ANY PARTICULAR PURPOSE. SELLER SPECIFICALLY DISCLAIMS ANY SUCH REPRESENTATIONS AND WARRANTIES. SELLER IS NOT A MANUFACTURER OR DEALER OF THE PROPERTY. THE FOREGOING TERMS AND CONDITIONS OF SALE AND DISCLAIMER CANNOT BE MODIFIED OR TERMINATED ORALLY. ONLY A WRITTEN INSTRUMENT, SIGNED BY AN OFFICER OF SELLER, SHALL BE EFFECTIVE TO MODIFY OR TERMINATE ANY PROVISIONS THERE OF BUT ONLY TO THE EXTENT SPECIFICALLY SET FORTH THEREIN.