



National Inspection Services
: 174450 on 11/01/2019
VIN: 2FZHCHDJ97AY31302

Commercial Credit Group, Inc Mark Wenzel
227 w trade st Charlotte, NC 28202 USA
(704) 414-2456

2007 STERLING ACTERRA

ACTERRA Specifications	
Engine	Mercedes MBE 900 7.2L
Engine Brake	Yes
Fuel	Diesel 1 Alum Tank 60 Gal. Total
Transmission	Allison Auto MD-3060 6 Spd
Rear	Meritor
Axles	Tandem 18,000 Front / 46,000 Rear
GVWR (lbs)	62,000
Frame Type	Steel
Suspension	Camelback
Wheelbase	230"
Tire Size F	12R22.5
Tire Size R	315/80R22.5
Wheels	Steel
Exterior	145"H 96"W 23'L
A/C	Yes * See Notes
Interior Color	GRAY
Hi Back Seats	Driver Side Only
Pass Seat	Stationary
Exterior Color	WHITE
Bumper	Painted
Heated Mirrors	No
External Visor	No

Drive Options
Overdrive, Cruise Control, Power Steering

Inspection Photos



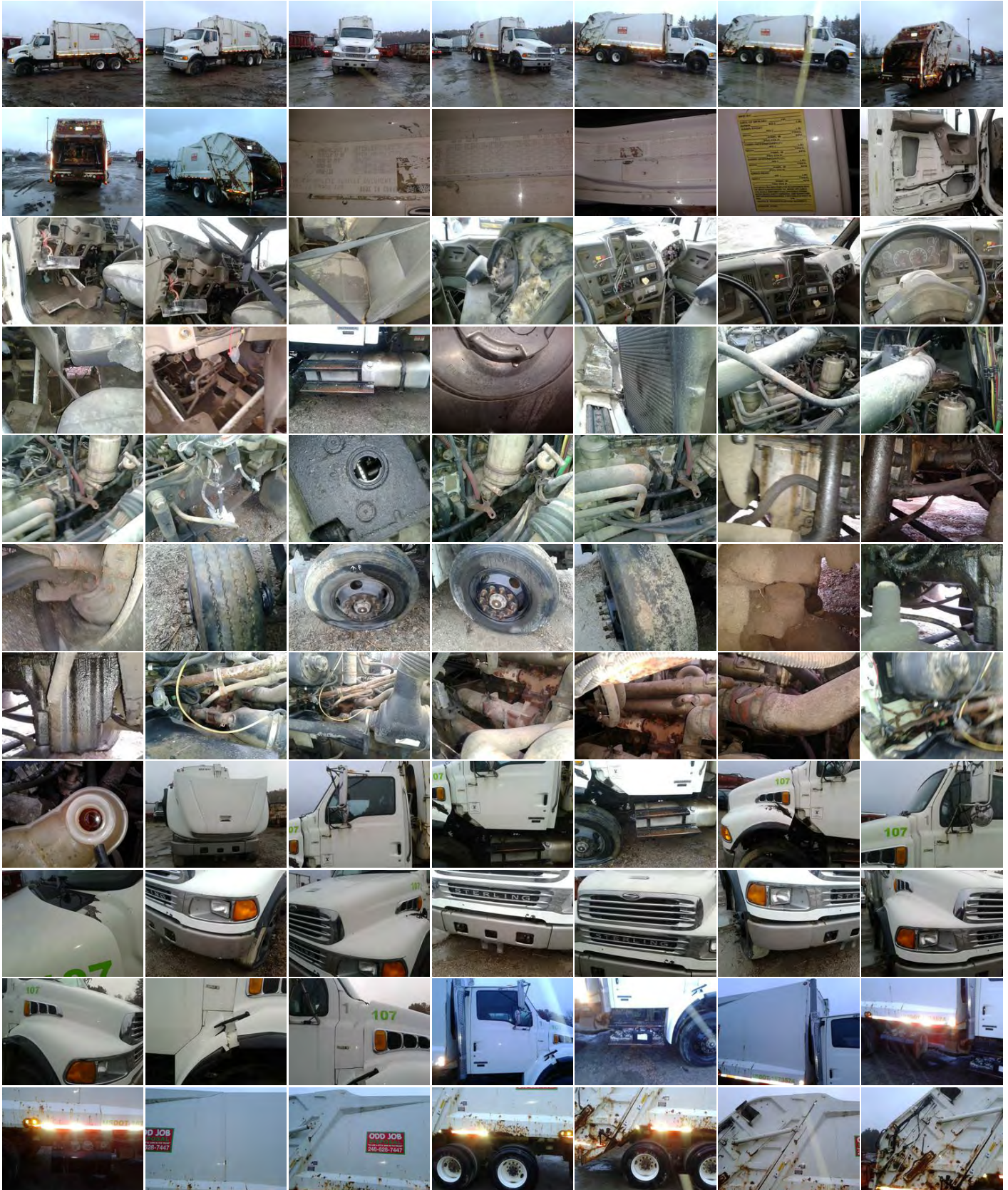
Notes / Description

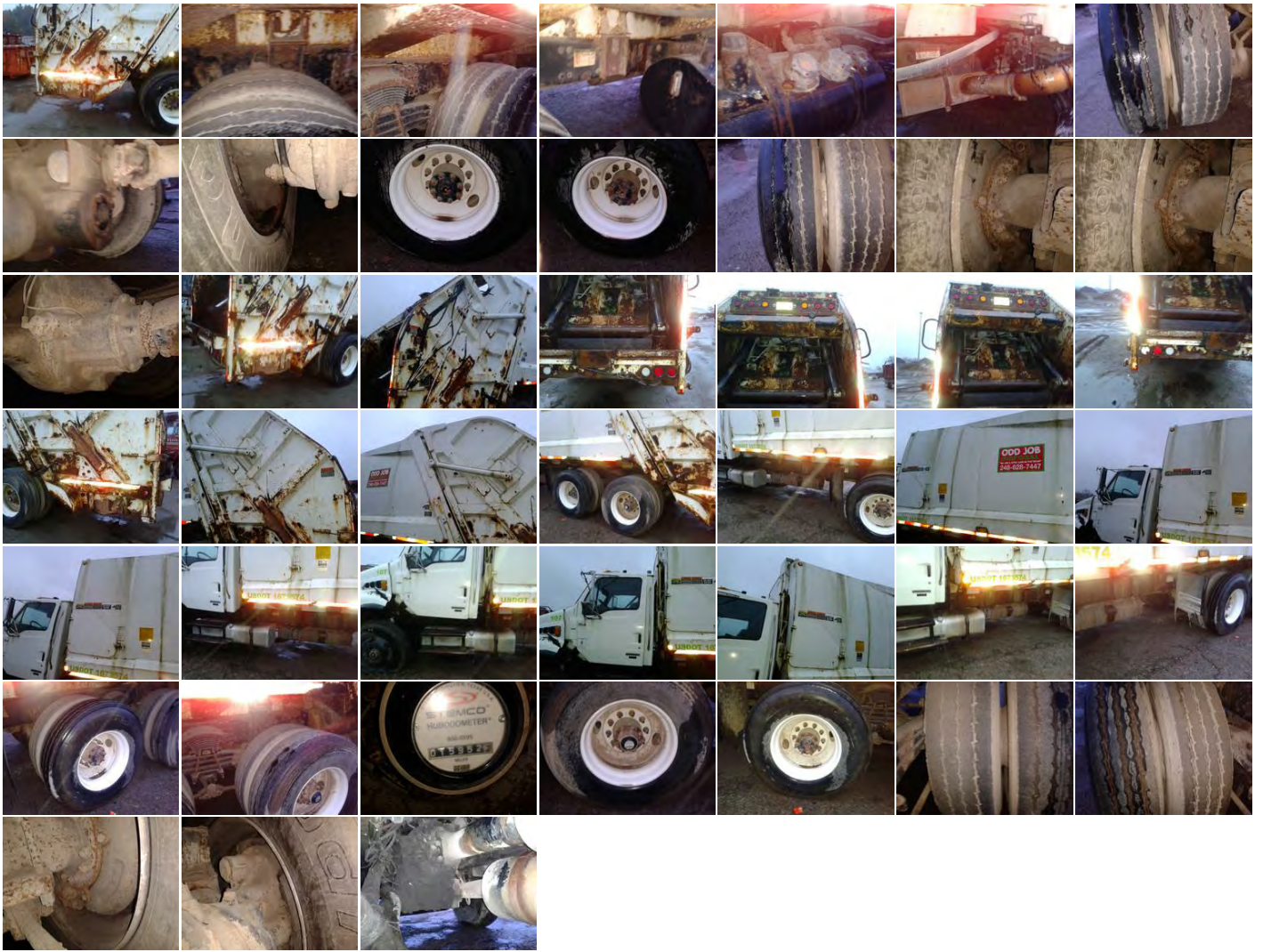


National Inspection Services
: 174450 on 11/01/2019
VIN: 2FZHCHDJ97AY31302

Commercial Credit Group, Inc Mark Wenzel
227 w trade st Charlotte, NC 28202 USA
(704) 414-2456

2007 STERLING ACTERRA PHOTOS







National Inspection Services
 # : 174450 on 11/01/2019
 VIN: 2FZHCHDJ97AY31302

Commercial Credit Group, Inc Mark Wenzel
 227 w trade st Charlotte, NC 28202 USA
 (704) 414-2456

2007 STERLING ACTERRA

Brakes	
Disc	Disc
Disc	Disc
Disc	Disc
Additional Brake Detail	
disc brakes all axles could not guage	

Tires			
Front 12R22.5	6 / 32 Steel	4 / 32 Steel	Rear 315/80R22.5
BFGoodrich 20 / 32 Steel	BFGoodrich 21 / 32 Steel	Firestone 8 / 32 Steel	Bridgestone 11 / 32 Steel
Michelin 9 / 32 Steel	Firestone 4 / 32 Steel	Goodyear 11 / 32 Steel	Goodyear 10 / 32 Steel
Additional Tire Detail			
all drives are recaps, steers are Goodride brand			

General Observations	
Oil Milky? No	Oil Leaks? Yes
Water Leaks? No	Oil in Coolant? No
Clutch Play? NA	Starts? No
Drives? No	
Safety / Operational Observations	
Lights Work? See Notes	Wipers Work? See Notes
Gauges Work? See Notes	City Horn Works? See Notes
Air Horn Works? See Notes	
Additional Observation Detail	
Unit does not start. Could not perform operational checklist. Leak at oil pan and both sides of block. Transmission leaking.	

Wear and Tear Items	
interior	dirty, seats torn, dash torn apart, several parts laying on seat
doors	left door missing inside handle and latch assembly, panel missing, right door bottom panel missing
fenders	scraped, cracked, chipped
paint	chips at doors, fenders, hood and cab, box sides, rims
bumper	not aligned passenger side
tires	5 under 10/32 front drive side tire flat
hood latch	driver side missing above wheel housing
rust	varying levels of surface rust present throughout unit
mud flaps	damaged
front drive	leaking
paint	various chips and scratches

Condition report only. National Inspection Services does not guarantee mechanical reliability.

© 2019 National Inspection Services (NIS)
101 W. Shrader St. Liberty, MO 64068
www.nationalinspect.com

REPORT WAS PREPARED BY A THIRD PARTY. ALL EQUIPMENT PHOTOGRAPHS ON THIS REPORT DEPICT USED EQUIPMENT AND ("SELLER") DOES NOT ASSERT THEIR ACCURACY OR COMPLETENESS. SELLER IS NOT A MANUFACTURER, DEALER OR SERVICER OF EQUIPMENT. PHYSICAL INSPECTION OF THE USED EQUIPMENT DEPICTED HEREIN IS ENCOURAGED, AND ANY PURCHASING DECISIONS SHOULD BE BASED UPON SUCH ACTUAL INSPECTION THEREOF AS THE INTERESTED PERSON DEEMS APPROPRIATE. SELLER MAKES NO REPRESENTATIONS OR WARRANTIES WHATSOEVER. THE PROPERTY IS SOLD "AS IS" AND "WHERE IS", AND SELLER MAKES NO REPRESENTATION OR WARRANTY, EXPRESS OR IMPLIED, WITH RESPECT TO ANY MATTER WHATSOEVER, INCLUDING, WITHOUT LIMITATION, TITLE, THE CONDITION OF THE PROPERTY, ITS MERCHANTABILITY OR ITS FITNESS FOR ANY PARTICULAR PURPOSE. SELLER SPECIFICALLY DISCLAIMS ANY SUCH REPRESENTATIONS AND WARRANTIES. SELLER IS NOT A MANUFACTURER OR DEALER OF THE PROPERTY. THE FOREGOING TERMS AND CONDITIONS OF SALE AND DISCLAIMER CANNOT BE MODIFIED OR TERMINATED ORALLY. ONLY A WRITTEN INSTRUMENT, SIGNED BY AN OFFICER OF SELLER, SHALL BE EFFECTIVE TO MODIFY OR TERMINATE ANY PROVISIONS THERE OF BUT ONLY TO THE EXTENT SPECIFICALLY SET FORTH THEREIN.