



National Inspection Services
: 165494 on 04/17/2019
VIN: 1RNF48A26GR038493

Commercial Credit Group, Inc Mark Wenzel
227 w trade st Charlotte, NC 28202 USA
(704) 414-2456

2016 REITNOUER FLATBED

FLATBED Specifications	
Axles	Tandem 23,000 Front / 23,000 Rear
Spread Axle	Yes
Frame Type	Aluminum
Suspension	Air Ride
Tire Size F	295/75R22.5
Tire Size R	295/75R22.5
Wheels	Aluminum
Exterior	102"W 48'L

Drive Options

Inspection Photos



Notes / Description

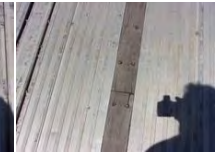
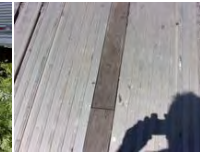


National Inspection Services
: 165494 on 04/17/2019
VIN: 1RNF48A26GR038493

Commercial Credit Group, Inc Mark Wenzel
227 w trade st Charlotte, NC 28202 USA
(704) 414-2456

2016 REITNOUER FLATBED PHOTOS







National Inspection Services
 # : 165494 on 04/17/2019
 VIN: 1RNF48A26GR038493

Commercial Credit Group, Inc Mark Wenzel
 227 w trade st Charlotte, NC 28202 USA
 (704) 414-2456

2016 REITNOUER FLATBED

Brakes	
18	18
14	18
Additional Brake Detail	

Tires			
Front 295/75R22.5	/ 32	/ 32	Rear 295/75R22.5
9 / 32 Aluminum	8 / 32 Aluminum	9 / 32 Aluminum	8 / 32 Aluminum
4 / 32 Aluminum	4 / 32 Aluminum	3 / 32 Aluminum	3 / 32 Aluminum
Additional Tire Detail			
Brands: Front Axle = Ironman Rear Axle = Americus			

General Observations						
Oil Milky?	Oil Leaks?	NA	Water Leaks?	NA	Oil in Coolant?	NA
Clutch Play?	NA	Starts?	NA	Drives?	NA	
Safety / Operational Observations						
Lights Work?	NA	Wipers Work?	NA	Gauges Work?	NA	City Horn Works?
Air Horn Works?	NA					
Additional Observation Detail						

Wear and Tear Items	
landing gear	R/S bracket to leg, weld is broke, bracket is separated from leg
air control box	control box for air leveling is broken off of bracket
wood floor inserts	showing some weathering deterioration
tires	8 measure below 10/32, rear axle tires show more wear

Condition report only. National Inspection Services does not guarantee mechanical reliability.

© 2019 National Inspection Services (NIS)
 101 W. Shrader St. Liberty, MO 64068
www.nationalinspect.com

REPORT WAS PREPARED BY A THIRD PARTY. ALL EQUIPMENT PHOTOGRAPHS ON THIS REPORT DEPICT USED EQUIPMENT AND ("SELLER") DOES NOT ASSERT THEIR ACCURACY OR COMPLETENESS. SELLER IS NOT A MANUFACTURER, DEALER OR SERVICER OF EQUIPMENT. PHYSICAL INSPECTION OF THE USED EQUIPMENT DEPICTED HEREIN IS ENCOURAGED, AND ANY PURCHASING DECISIONS SHOULD BE BASED UPON SUCH ACTUAL INSPECTION THEREOF AS THE INTERESTED PERSON DEEMS APPROPRIATE. SELLER MAKES NO REPRESENTATIONS OR WARRANTIES WHATSOEVER. THE PROPERTY IS SOLD "AS IS" AND "WHERE IS", AND SELLER MAKES NO REPRESENTATION OR WARRANTY, EXPRESS OR IMPLIED, WITH RESPECT TO ANY MATTER WHATSOEVER, INCLUDING, WITHOUT LIMITATION, TITLE, THE CONDITION OF THE PROPERTY, ITS MERCHANTABILITY OR ITS FITNESS FOR ANY PARTICULAR PURPOSE. SELLER SPECIFICALLY DISCLAIMS ANY SUCH REPRESENTATIONS AND WARRANTIES. SELLER IS NOT A MANUFACTURER OR DEALER OF THE PROPERTY. THE FOREGOING TERMS AND CONDITIONS OF SALE AND DISCLAIMER CANNOT BE MODIFIED OR TERMINATED ORALLY. ONLY A WRITTEN INSTRUMENT, SIGNED BY AN OFFICER OF SELLER, SHALL BE EFFECTIVE TO MODIFY OR TERMINATE ANY PROVISIONS THERE OF BUT ONLY TO THE EXTENT SPECIFICALLY SET FORTH THEREIN.