



National Inspection Services
 # : 183878 on 05/12/2020
 VIN: 1XPXD49X4GD322457 Unit: 6067

Commercial Credit Group, Inc Mark Wenzel
 227 w trade st Charlotte, NC 28202 USA
 (704) 414-2456

2016 PETERBILT 389

389 Specifications	
Mileage	315,850
Engine Hours	2127
Engine	Cummins ISX15 525 HP
Engine Brake	Yes
Engine Serial	79845150
Fuel	Diesel 2 Alum Tanks 260 Gal. Total
Exhaust	Dual Chrome
Ext. Breathers	Dual Stainless
Transmission	Eaton Manual RTLO-18918B 18 Spd
Rear	Spicer 3.55
Axles	Tandem 12,350 Front / 40,000 Rear
GVWR (lbs)	52,350
Frame Type	Steel
Suspension	Air Ride
Wheelbase	270"
Tire Size F	295/75R22.5
Tire Size R	295/75R22.5
Wheels	Aluminum
5th Wheel	Air Slide
A/C	Yes * See Notes
Sleeper Size	70"
Dual Bunks	Yes
Interior Color	BLACK
Radio Config	AM/FM/CD * Operational
Power Mirrors	Dual Power
Hi Back Seats	Dual
Pass Seat	Air Ride
Exterior Color	WHITE
Bumper	Chrome
Heated Mirrors	No
Fairings	Roof
External Visor	Yes

Drive Options
Overdrive, Cruise Control, Power Steering

Inspection Photos



Notes / Description

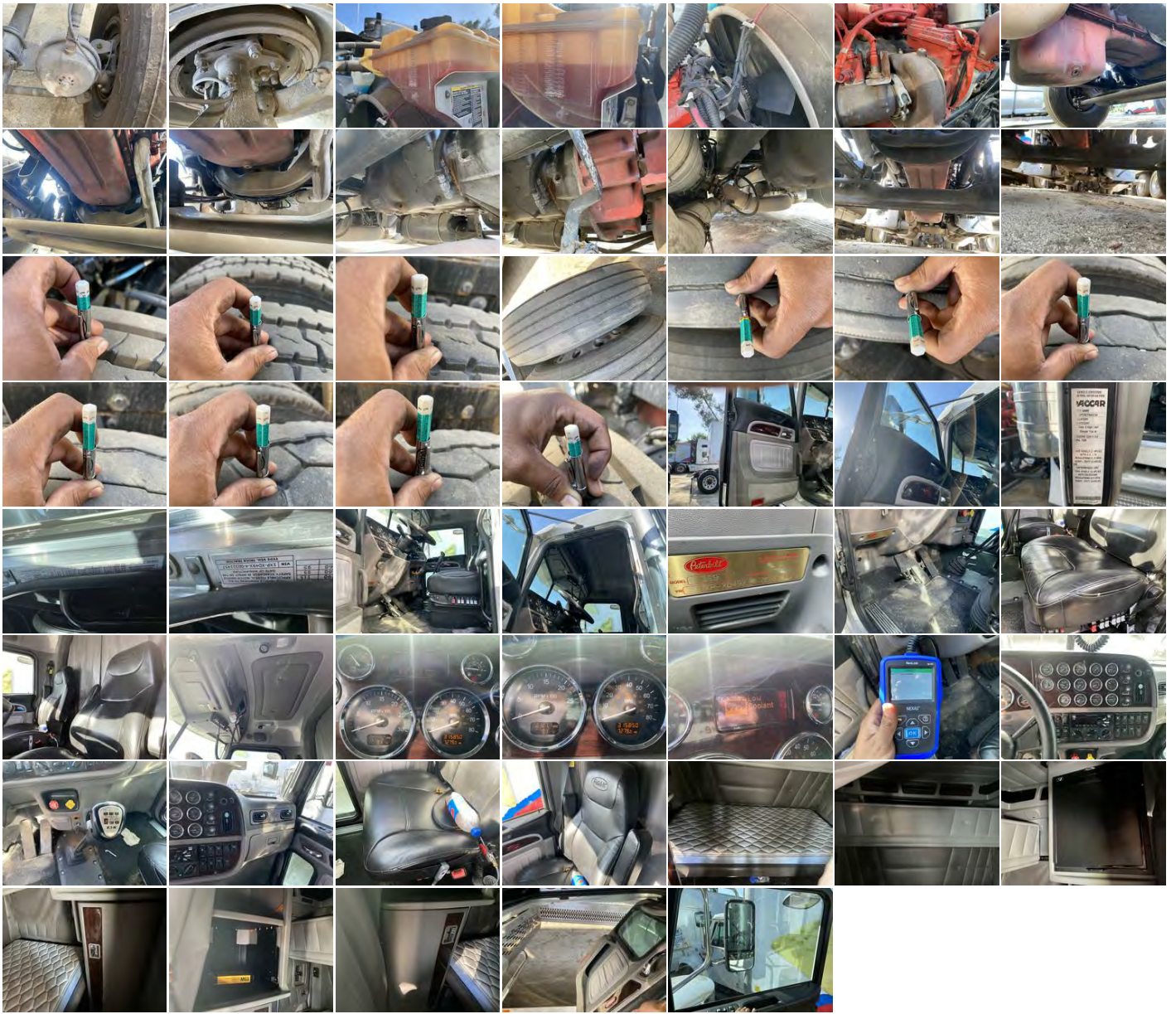


National Inspection Services
: 183878 on 05/12/2020
VIN: 1XPXD49X4GD322457 Unit: 6067

Commercial Credit Group, Inc Mark Wenzel
227 w trade st Charlotte, NC 28202 USA
(704) 414-2456

2016 PETERBILT 389 PHOTOS







National Inspection Services
 # : 183878 on 05/12/2020
 VIN: 1XPXD49X4GD322457 Unit: 6067

Commercial Credit Group, Inc Mark Wenzel
 227 w trade st Charlotte, NC 28202 USA
 (704) 414-2456

2016 PETERBILT 389

Brakes	
18	14
17	14
Additional Brake Detail	
Front disc	

Tires			
Front 295/75R22.5	Goodyear 20 / 32 Aluminum	Goodyear 20 / 32 Aluminum	Rear 295/75R22.5
Yokohama 15 / 32 Aluminum	Yokohama 15 / 32 Aluminum	9 / 32 Aluminum	12 / 32 Aluminum
Goodyear 2 / 32 Aluminum	Goodyear 7 / 32 Aluminum	Goodyear 6 / 32 Aluminum	Goodyear 7 / 32 Aluminum
Additional Tire Detail			

General Observations					
Oil Milky? No	Oil Leaks? See Notes	Water Leaks? No	Oil in Coolant? Yes	Clutch Play? NA	Starts? See Notes
Drives? See Notes					
Safety / Operational Observations					
Lights Work? Yes - All	Wipers Work? Yes	Gauges Work? See Notes	City Horn Works? Yes	Air Horn Works? See Notes	
Additional Observation Detail					
Coolant seen in fuel system. Fuel filter filled with coolant. Inspector was told not to start unit. Coolant reservoir low. Residue noted at front of oil pan.					

Wear and Tear Items	
Headlight	Passenger head light has deep scratches on the lens.
Diagnostics	Low coolant message seen on dash
Tires	5 below 10/32's - Uneven wear seen on second axle outer tire driver side.
Wheels	Hub covers rusted / missing
Paint	Various chips and scratches

REPORT WAS PREPARED BY A THIRD PARTY. ALL EQUIPMENT PHOTOGRAPHS ON THIS REPORT DEPICT USED EQUIPMENT AND ("SELLER") DOES NOT ASSERT THEIR ACCURACY OR COMPLETENESS. SELLER IS NOT A MANUFACTURER, DEALER OR SERVICER OF EQUIPMENT. PHYSICAL INSPECTION OF THE USED EQUIPMENT DEPICTED HEREIN IS ENCOURAGED, AND ANY PURCHASING DECISIONS SHOULD BE BASED UPON SUCH ACTUAL INSPECTION THEREOF AS THE INTERESTED PERSON DEEMS APPROPRIATE. SELLER MAKES NO REPRESENTATIONS OR WARRANTIES WHATSOEVER. THE PROPERTY IS SOLD "AS IS" AND "WHERE IS", AND SELLER MAKES NO REPRESENTATION OR WARRANTY, EXPRESS OR IMPLIED, WITH RESPECT TO ANY MATTER WHATSOEVER, INCLUDING, WITHOUT LIMITATION, TITLE, THE CONDITION OF THE PROPERTY, ITS MERCHANTABILITY OR ITS FITNESS FOR ANY PARTICULAR PURPOSE. SELLER SPECIFICALLY DISCLAIMS ANY SUCH REPRESENTATIONS AND WARRANTIES. SELLER IS NOT A MANUFACTURER OR DEALER OF THE PROPERTY. THE FOREGOING TERMS AND CONDITIONS OF SALE AND DISCLAIMER CANNOT BE MODIFIED OR TERMINATED ORALLY. ONLY A WRITTEN INSTRUMENT, SIGNED BY AN OFFICER OF SELLER, SHALL BE EFFECTIVE TO MODIFY OR TERMINATE ANY PROVISIONS THERE OF BUT ONLY TO THE EXTENT SPECIFICALLY SET FORTH THEREIN.