




National Inspection Services  
# : 192716 on 12/07/2020  
VIN: 002067 Unit: 6688

Commercial Credit Group, Inc Mark Wenzel  
525 N. Tryon Street Charlotte, NC 28202 USA  
(704) 414-2456

## 2007 KOMATSU HM 300-2

HM 300-2 Specifications	
Engine	SAA6D125E-5 / 340HP
Fuel	Diesel
Tire Size F	23.5 R25
Tire Size R	23.5 R25
Drive Options	

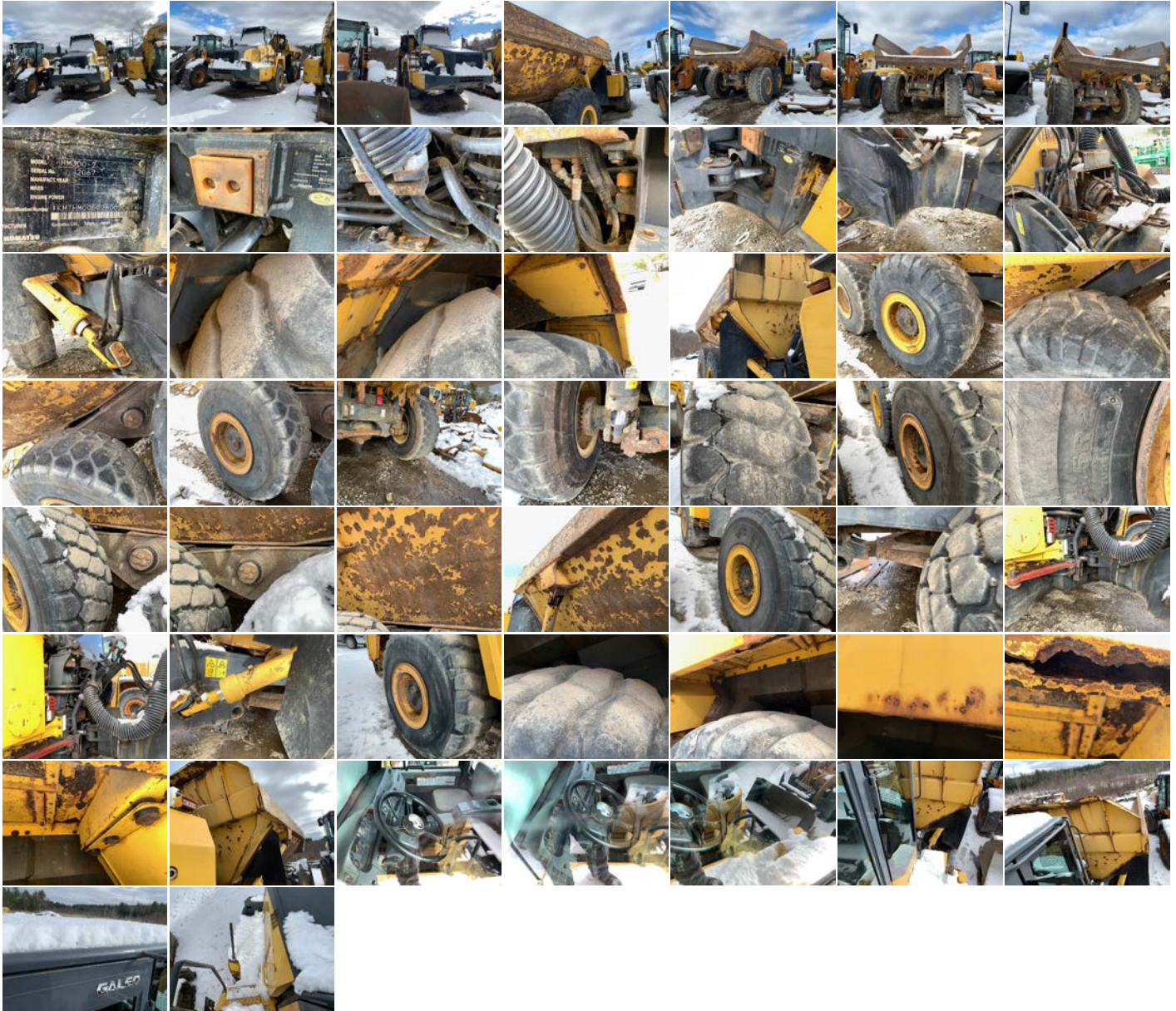
Inspection Photos

Notes / Description



National Inspection Services  
# : 192716 on 12/07/2020  
VIN: 002067 Unit: 6688

Commercial Credit Group, Inc Mark Wenzel  
525 N. Tryon Street Charlotte, NC 28202 USA  
(704) 414-2456

## 2007 KOMATSU HM 300-2 PHOTOS





National Inspection Services  
 # : 192716 on 12/07/2020  
 VIN: 002067 Unit: 6688

Commercial Credit Group, Inc Mark Wenzel  
 525 N. Tryon Street Charlotte, NC 28202 USA  
 (704) 414-2456

## 2007 KOMATSU HM 300-2

Brakes	
<input type="text"/>	<input type="text"/>
<input type="text"/>	<input type="text"/>
<input type="text"/>	<input type="text"/>
Additional Brake Detail	
Inaccessible	

Tires			
Front 23.5 R25	/ 32	/ 32	Rear 23.5 R25
<input type="text"/>	<input type="text"/>	<input type="text"/>	<input type="text"/>
<input type="text"/>	<input type="text"/>	<input type="text"/>	<input type="text"/>
Additional Tire Detail			
tractor tires NOT MEASURED see pics			

General Observations	
Oil Milky? See Notes	Oil Leaks? See Notes
Water Leaks? See Notes	Oil in Coolant? See Notes
Clutch Play? NA	Starts? See Notes
Drives? See Notes	
Safety / Operational Observations	
Lights Work? See Notes	Wipers Work? See Notes
Gauges Work? See Notes	City Horn Works? See Notes
Air Horn Works? NA	
Additional Observation Detail	
Unable to access cab due to weather conditions	

Wear and Tear Items	
Cab Access Door	frozen in place due to ice and snow, unable to access cab
Paint	Various chips and scratches throughout unit
Dump Body	Rusted throughout
Tires	Multiple tires are weather cracked
Evacuation Chute	Mising cover
Steering Wheel	Missing horn button

Condition report only. National Inspection Services does not guarantee mechanical reliability.

REPORT WAS PREPARED BY A THIRD PARTY. ALL EQUIPMENT PHOTOGRAPHS ON THIS REPORT DEPICT USED EQUIPMENT AND ("SELLER") DOES NOT ASSERT THEIR ACCURACY OR COMPLETENESS. SELLER IS NOT A MANUFACTURER, DEALER OR SERVICER OF EQUIPMENT. PHYSICAL INSPECTION OF THE USED EQUIPMENT DEPICTED HEREIN IS ENCOURAGED, AND ANY PURCHASING DECISIONS SHOULD BE BASED UPON SUCH ACTUAL INSPECTION THEREOF AS THE INTERESTED PERSON DEEMS APPROPRIATE. SELLER MAKES NO REPRESENTATIONS OR WARRANTIES WHATSOEVER. THE PROPERTY IS SOLD "AS IS" AND "WHERE IS", AND SELLER MAKES NO REPRESENTATION OR WARRANTY, EXPRESS OR IMPLIED, WITH RESPECT TO ANY MATTER WHATSOEVER, INCLUDING, WITHOUT LIMITATION, TITLE, THE CONDITION OF THE PROPERTY, ITS MERCHANTABILITY OR ITS FITNESS FOR ANY PARTICULAR PURPOSE. SELLER SPECIFICALLY DISCLAIMS ANY SUCH REPRESENTATIONS AND WARRANTIES. SELLER IS NOT A MANUFACTURER OR DEALER OF THE PROPERTY. THE FOREGOING TERMS AND CONDITIONS OF SALE AND DISCLAIMER CANNOT BE MODIFIED OR TERMINATED ORALLY. ONLY A WRITTEN INSTRUMENT, SIGNED BY AN OFFICER OF SELLER, SHALL BE EFFECTIVE TO MODIFY OR TERMINATE ANY PROVISIONS THERE OF BUT ONLY TO THE EXTENT SPECIFICALLY SET FORTH THEREIN.