




National Inspection Services  
# : 192719 on 12/07/2020  
VIN: YT0830486 Unit: 6696

Commercial Credit Group, Inc Mark Wenzel  
525 N. Tryon Street Charlotte, NC 28202 USA  
(704) 414-2456

## 2015 KOBELCO SK75SR

SK75SR Specifications	
Engine	Isuzu 4LE2 2.1L 133HP
Fuel	Diesel
Tire Size F	Tracked
Tire Size R	Tracked
Drive Options	

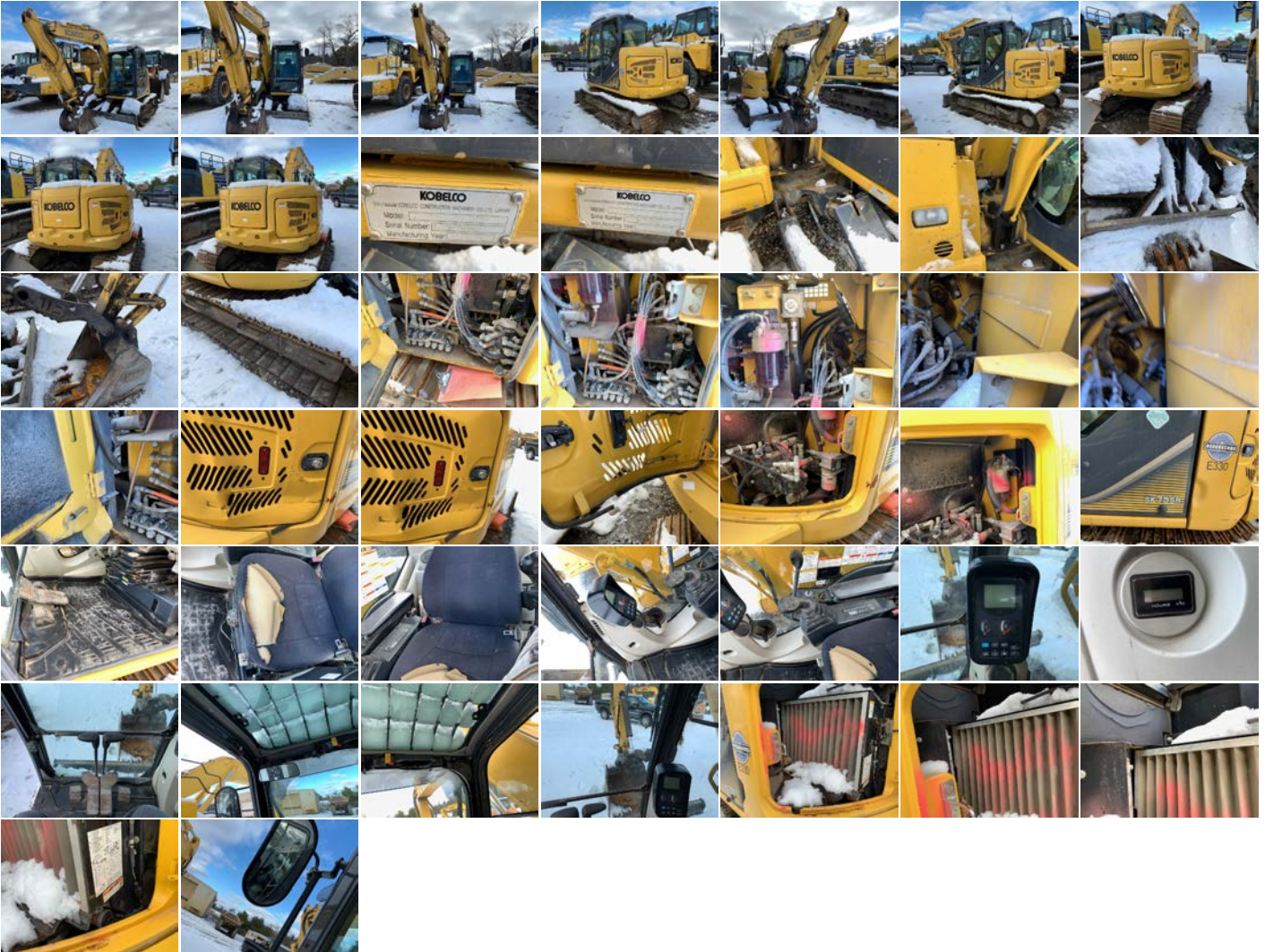
Inspection Photos

Notes / Description



National Inspection Services  
# : 192719 on 12/07/2020  
VIN: YT0830486 Unit: 6696

Commercial Credit Group, Inc Mark Wenzel  
525 N. Tryon Street Charlotte, NC 28202 USA  
(704) 414-2456

## 2015 KOBELCO SK75SR PHOTOS





National Inspection Services  
 # : 192719 on 12/07/2020  
 VIN: YT0830486 Unit: 6696

Commercial Credit Group, Inc Mark Wenzel  
 525 N. Tryon Street Charlotte, NC 28202 USA  
 (704) 414-2456

## 2015 KOBELCO SK75SR

Brakes	
<input type="text"/>	<input type="text"/>
Additional Brake Detail	

Tires			
Front Tracked	/ 32	/ 32	Rear Tracked
Additional Tire Detail			

General Observations
Oil Milky? See Notes   Oil Leaks? See Notes   Water Leaks? See Notes   Oil in Coolant? See Notes   Clutch Play? NA Starts? See Notes   Drives? See Notes
Safety / Operational Observations
Lights Work? NA   Wipers Work? NA   Gauges Work? See Notes   City Horn Works? See Notes   Air Horn Works? See Notes
Additional Observation Detail
Batteries are dead

Wear and Tear Items	
Interior	Soiled
Batteries	Dead, no start
Engine Access Doors	Right rear corner door is dented
Seat	torn
Mirrors	Side mirror cracked
Paint	Various chips and scratches noted throughout unit

Condition report only. National Inspection Services does not guarantee mechanical reliability.

© 2020 National Inspection Services (NIS)  
 101 W. Shrader St. Liberty, MO 64068  
[www.nationalinspect.com](http://www.nationalinspect.com)

**REPORT WAS PREPARED BY A THIRD PARTY. ALL EQUIPMENT PHOTOGRAPHS ON THIS REPORT DEPICT USED EQUIPMENT AND ("SELLER") DOES NOT ASSERT THEIR ACCURACY OR COMPLETENESS. SELLER IS NOT A MANUFACTURER, DEALER OR SERVICER OF EQUIPMENT. PHYSICAL INSPECTION OF THE USED EQUIPMENT DEPICTED HEREIN IS ENCOURAGED, AND ANY PURCHASING DECISIONS SHOULD BE BASED UPON SUCH ACTUAL INSPECTION THEREOF AS THE INTERESTED PERSON DEEMS APPROPRIATE. SELLER MAKES NO REPRESENTATIONS OR WARRANTIES WHATSOEVER. THE PROPERTY IS SOLD "AS IS" AND "WHERE IS", AND SELLER MAKES NO REPRESENTATION OR WARRANTY, EXPRESS OR IMPLIED, WITH RESPECT TO ANY MATTER WHATSOEVER, INCLUDING, WITHOUT LIMITATION, TITLE, THE CONDITION OF THE PROPERTY, ITS MERCHANTABILITY OR ITS FITNESS FOR ANY PARTICULAR PURPOSE. SELLER SPECIFICALLY DISCLAIMS ANY SUCH REPRESENTATIONS AND WARRANTIES. SELLER IS NOT A MANUFACTURER OR DEALER OF THE PROPERTY. THE FOREGOING TERMS AND CONDITIONS OF SALE AND DISCLAIMER CANNOT BE MODIFIED OR TERMINATED ORALLY. ONLY A WRITTEN INSTRUMENT, SIGNED BY AN OFFICER OF SELLER, SHALL BE EFFECTIVE TO MODIFY OR TERMINATE ANY PROVISIONS THERE OF BUT ONLY TO THE EXTENT SPECIFICALLY SET FORTH THEREIN.**