



**Commercial Credit Group, Inc (Mark Wenzel)**  
525 N Tryon Street, Charlotte, NC 28202 USA  
(704) 414-2456

VIN: 5VGFE473XNL006642  
PO #: 14099

**2022 OTHER KAUFFMAN EZIV**

SPECIFICATIONS	
AXLE TYPE	TRI - F 8,000 LB / R 8,000 LB
FRAME	STEEL
SUSPENSION	SPRING
TIRE SIZE	215/75R17.5
WHEELS	F STEEL / R STEEL
EXTERIOR L (FT)	47.0
EXTERIOR COLOR	BLACK

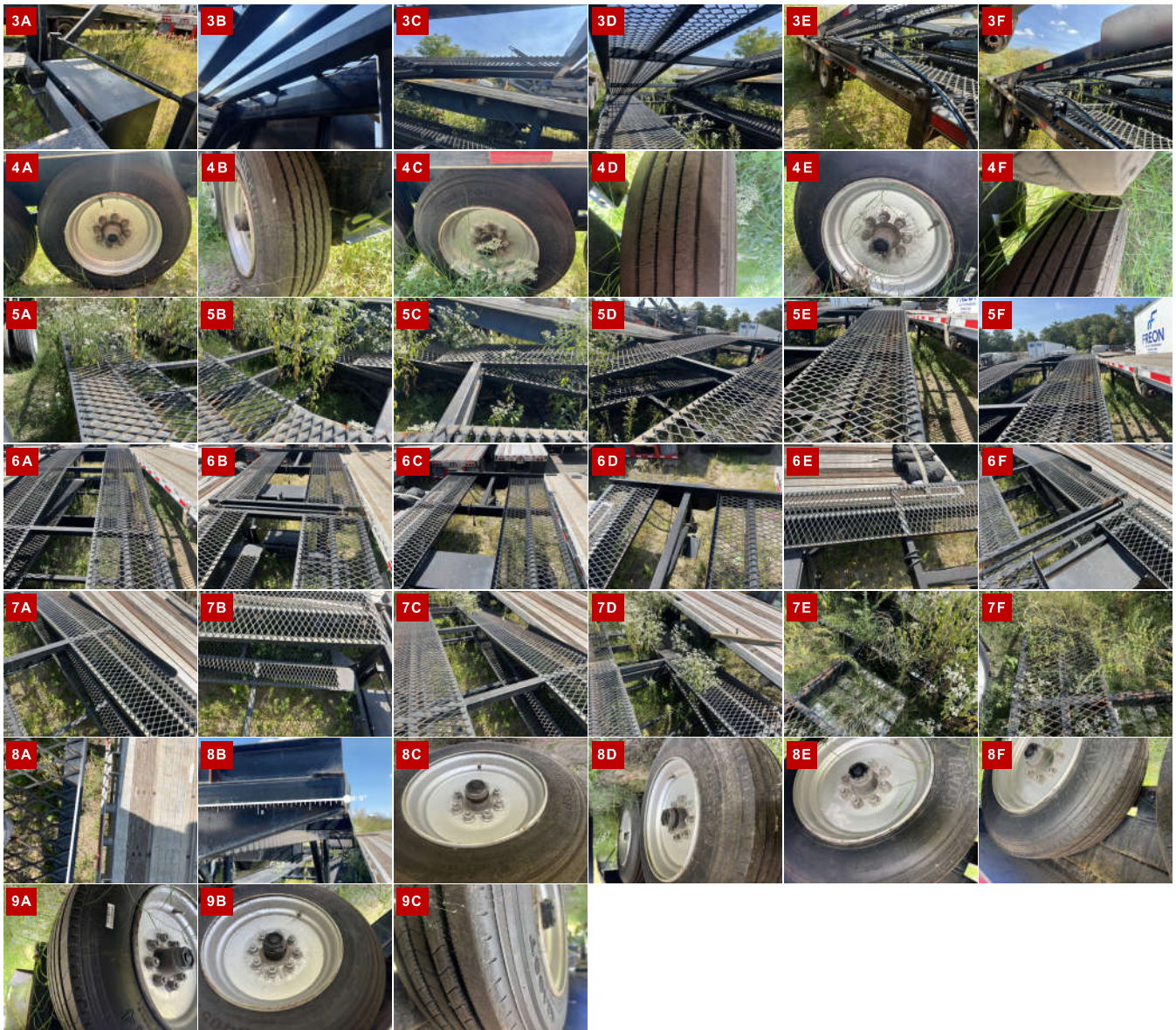


BRAKES	
<b>LEFT REAR 1</b>	<b>RIGHT REAR 1</b>
COVERED	COVERED
<b>LEFT REAR 2</b>	<b>RIGHT REAR 2</b>
COVERED	COVERED
<b>LEFT REAR 3</b>	<b>RIGHT REAR 3</b>
COVERED	COVERED

TIRES & WHEELS			
<b>LEFT OUTER 1</b>	<b>LEFT INNER 1</b>	<b>RIGHT INNER 1</b>	<b>RIGHT OUTER 1</b>
10 / 32	-	-	10 / 32
-	-	-	-
STEEL	-	-	STEEL
<b>LEFT OUTER 2</b>	<b>LEFT INNER 2</b>	<b>RIGHT INNER 2</b>	<b>RIGHT OUTER 2</b>
12 / 32	-	-	11 / 32
-	-	-	-
STEEL	-	-	STEEL
<b>LEFT OUTER 3</b>	<b>LEFT INNER 3</b>	<b>RIGHT INNER 3</b>	<b>RIGHT OUTER 3</b>
12 / 32	-	-	10 / 32
-	-	-	-
STEEL	-	-	STEEL
<b>FRONT TIRES: 215/75R17.5</b>		<b>REAR TIRES: 215/75R17.5</b>	

WEAR & TEAR DETAIL	
<b>DECKING</b>	SOME SURFACE RUST ON DECKING
<b>LIGHTS AND DRIVEABILITY</b>	UNABLE TO TEST EITHER. EMPLOYEE DID STATE ALL LIGHTS WORKED AND UNIT DOES ROLL





Condition report only. National Inspection Services does not guarantee mechanical reliability.

© National Inspection Services  
101 W. Shrader St. Liberty, MO 64068  
[www.nationalinspect.com](http://www.nationalinspect.com)