



Commercial Credit Group, Inc (Mark Wenzel)
525 N Tryon Street, Charlotte, NC 28202 USA
(704) 414-2456

VIN: 1M1AN4GY4KM010079

2019 MACK ANTHEM

SPECIFICATIONS	
ENGINE	MACK MP8-445E 12.8L 445 HP
ENG BRAKE	YES
ENG SERIAL	1226085
FUEL / TANKS	DIESEL - 2 ALUM 250 GAL TOTAL
EXHAUST	VERTICAL
EXTERNAL BREATHERS	SINGLE
TRANSMISSION	MACK M DRIVE 12 SPD AUTO
DRIVE OPTS	POWER STEERING, OVERDRIVE, CRUISE
REAR END	MERITOR 3.36
AXLE TYPE	TANDEM - F 12,000 LB / R 40,000 LB
GVWR	52,000
FRAME	STEEL
SUSPENSION	AIR RIDE
TIRE SIZE	275/80R22.5
WHEELS	F ALUMINUM / R ALUMINUM
WHEEL 5TH	AIR SLIDE
AIR COND	YES, OPERATIONAL
SLEEPER	70"
INTERIOR COLOR	BLACK
RADIO	AM/FM, OPERATIONAL
MIRRORS	DUAL POWER
HIGH BACK SEATS	DUAL
PASSENGER SEAT	AIR RIDE
EXTERIOR COLOR	BLACK
BUMPER	PLASTIC
EXTERIOR OPTS	HEATED MIRRORS, FULL FAIRINGS
COLLISION AVOIDANCE?	YES



BRAKES	
LEFT FRONT	RIGHT FRONT
26	26
LEFT REAR 1	RIGHT REAR 1
28	28
LEFT REAR 2	RIGHT REAR 2
24	26

TIRES & WHEELS			
LEFT FRONT		RIGHT FRONT	
13 / 32 FIRESTONE ALUMINUM		13 / 32 FIRESTONE ALUMINUM	
LEFT OUTER 1	LEFT INNER 1	RIGHT INNER 1	RIGHT OUTER 1
21 / 32 - ALUMINUM	18 / 32 - ALUMINUM	17 / 32 FIRESTONE ALUMINUM	18 / 32 FIRESTONE ALUMINUM
LEFT OUTER 2	LEFT INNER 2	RIGHT INNER 2	RIGHT OUTER 2
19 / 32 - ALUMINUM	20 / 32 - ALUMINUM	17 / 32 - ALUMINUM	17 / 32 - ALUMINUM
FRONT TIRES: 275/80R22.5		REAR TIRES: 275/80R22.5	

ADDITIONAL TIRE DETAIL
IRONHEAD AND SUPER CLASS.

GENERAL OBSERVATIONS

OIL MILKY?	NO	LIGHTS WORK?	SEE NOTES
OIL LEAKS?	NO	WIPERS WORK?	SEE NOTES
WATER LEAKS?	NO	GAUGES WORK?	SEE NOTES
OIL IN COOLANT?	NO	AIR HORN WORKS?	SEE NOTES
CLUTCH PLAY?	NA	CITY HORN WORKS?	SEE NOTES

STARTS?	SEE NOTES
DRIVES	SEE NOTES

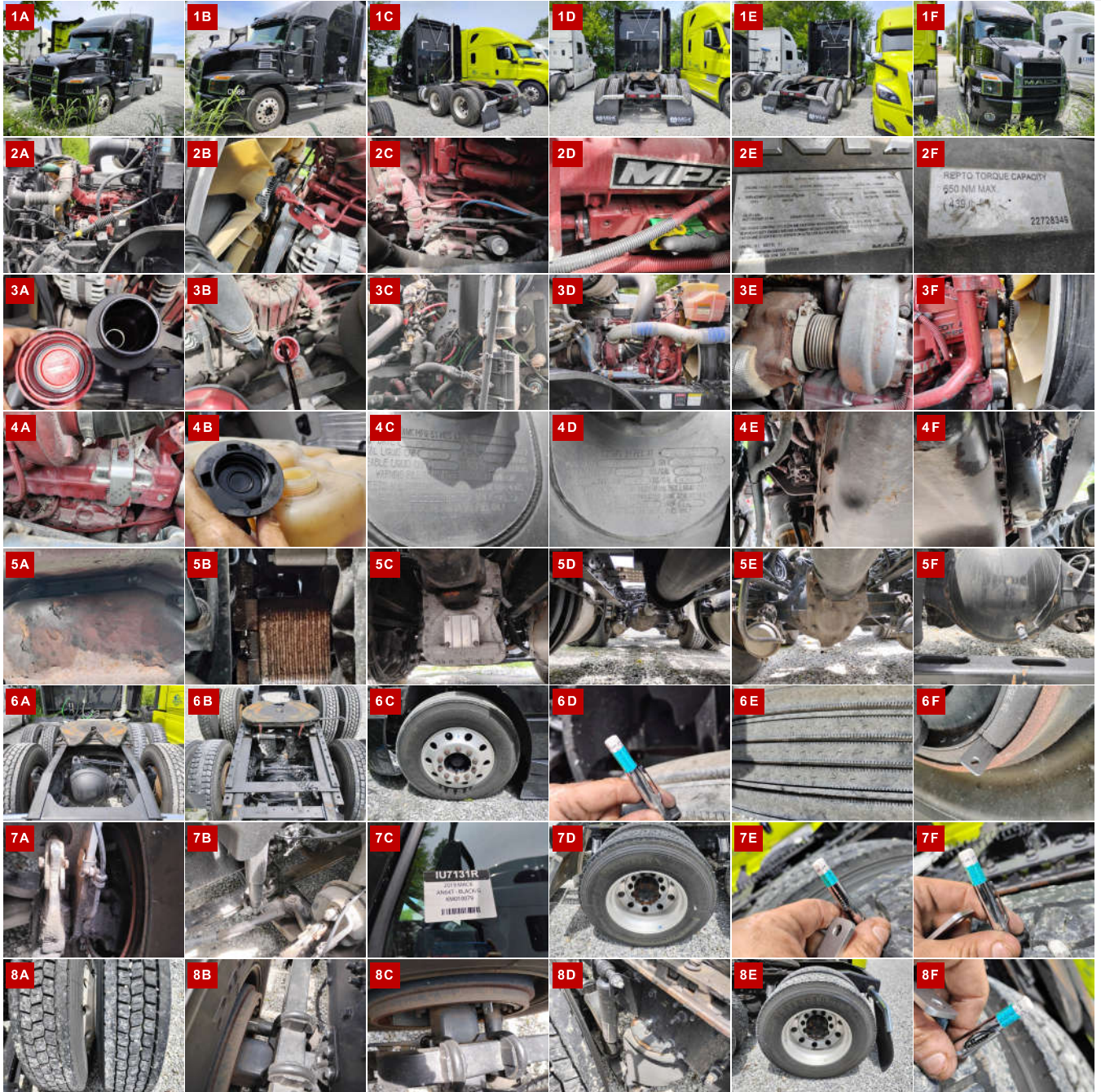
ADDITIONAL OBSERVATIONS

LOCATION DID NOT HAVE THE KEYS. BOTH DOORS ARE LOCKED.

WEAR & TEAR DETAIL

DIAGNOSTICS	NO KEY COULD NOT RUN OR CHECK ALL FUNCTIONS
HOOD	PAINT CHIPS AROUND HEADLIGHTS AND GRILLE
RUST	RUST ON TAIL LIGHT AND EXHAUST BRACKETS.
QUARTER FENDERS	BOTH ARE BENT
CAB	REAR OF CAB SCUFFED FROM AIR HOSES
FAIRING	MISSING BOTH LOWER RUBBER SKIRTS BOTTOM PIECE OF FAIRING.
SCRATCHES	SCRATCHES ON FENDERS, SIDE, AND DOOR.

REPORT PHOTOS





Condition report only. National Inspection Services does not guarantee mechanical reliability.

© National Inspection Services
101 W. Shrader St. Liberty, MO 64068
www.nationalinspect.com