



Commercial Credit Group, Inc (Mark Wenzel)
525 N Tryon Street, Charlotte, NC 28202 USA
(704) 414-2456

VIN: 1FUJGLDR1HLJF4709

2017 FREIGHTLINER CASCADIA 125

SPECIFICATIONS	
MILEAGE	537,912 / 239,908 (ECM)
ENGINE HOURS	26,150
ENGINE	DETROIT DD15 455 HP
ENG BRAKE	YES
ENG SERIAL	472910S044937
FUEL / TANKS	DIESEL - 2 ALUM 240 GAL TOTAL
EXHAUST	SINGLE
TRANSMISSION	DETROIT DT12-DA 1550 HD 12 SPD AUTO
DRIVE OPTS	POWER STEERING, OVERDRIVE, CRUISE
REAR END	DETROIT 3.08
AXLE TYPE	TANDEM - F 13,200 LB / R 40,000 LB
GVWR	53,200
FRAME	STEEL
SUSPENSION	AIR RIDE
WHEELBASE	228"
TIRE SIZE	11R22.5
WHEELS	F ALUMINUM / R ALUMINUM
WHEEL 5TH	AIR SLIDE
AIR COND	YES, OPERATIONAL
SLEEPER	72"
DUAL BUNK	YES
INTERIOR COLOR	GREY
RADIO	AM/FM / CD, OPERATIONAL
MIRRORS	DUAL POWER
HIGH BACK SEATS	DUAL
PASSENGER SEAT	STATIONARY
EXTERIOR COLOR	WHITE
BUMPER	PLASTIC
EXTERIOR OPTS	HEATED MIRRORS, FULL FAIRINGS



BRAKES	
LEFT REAR 1	RIGHT REAR 1
LEFT REAR 2	RIGHT REAR 2
ADDITIONAL BRAKE DETAIL	
BRAKE LININGS WERE INACCESSIBLE FOR MEASUREMENT.	

TIRES & WHEELS			
LEFT FRONT		RIGHT FRONT	
13 / 32 BRIDGESTONE ALUMINUM		13 / 32 BRIDGESTONE ALUMINUM	
LEFT OUTER 1	LEFT INNER 1	RIGHT INNER 1	RIGHT OUTER 1
8 / 32 BRIDGESTONE ALUMINUM	10 / 32 MICHELIN ALUMINUM	- BRIDGESTONE ALUMINUM	8 / 32 BRIDGESTONE ALUMINUM
LEFT OUTER 2	LEFT INNER 2	RIGHT INNER 2	RIGHT OUTER 2
6 / 32 CONTINENTAL ALUMINUM	6 / 32 CONTINENTAL ALUMINUM	5 / 32 CONTINENTAL ALUMINUM	3 / 32 CONTINENTAL ALUMINUM
FRONT TIRES: 11R22.5		REAR TIRES: 11R22.5	

GENERAL OBSERVATIONS

OIL MILKY?	NO	LIGHTS WORK?	YES - ALL
OIL LEAKS?	YES	WIPERS WORK?	YES
WATER LEAKS?	NO	GAUGES WORK?	YES - ALL
OIL IN COOLANT?	NO	AIR HORN WORKS?	YES
CLUTCH PLAY?	NA	CITY HORN WORKS?	YES
STARTS?	YES		

DRIVES	YES	DIESEL PARTICULATE FILTER	PASS
--------	-----	---------------------------	------

ADDITIONAL OBSERVATIONS

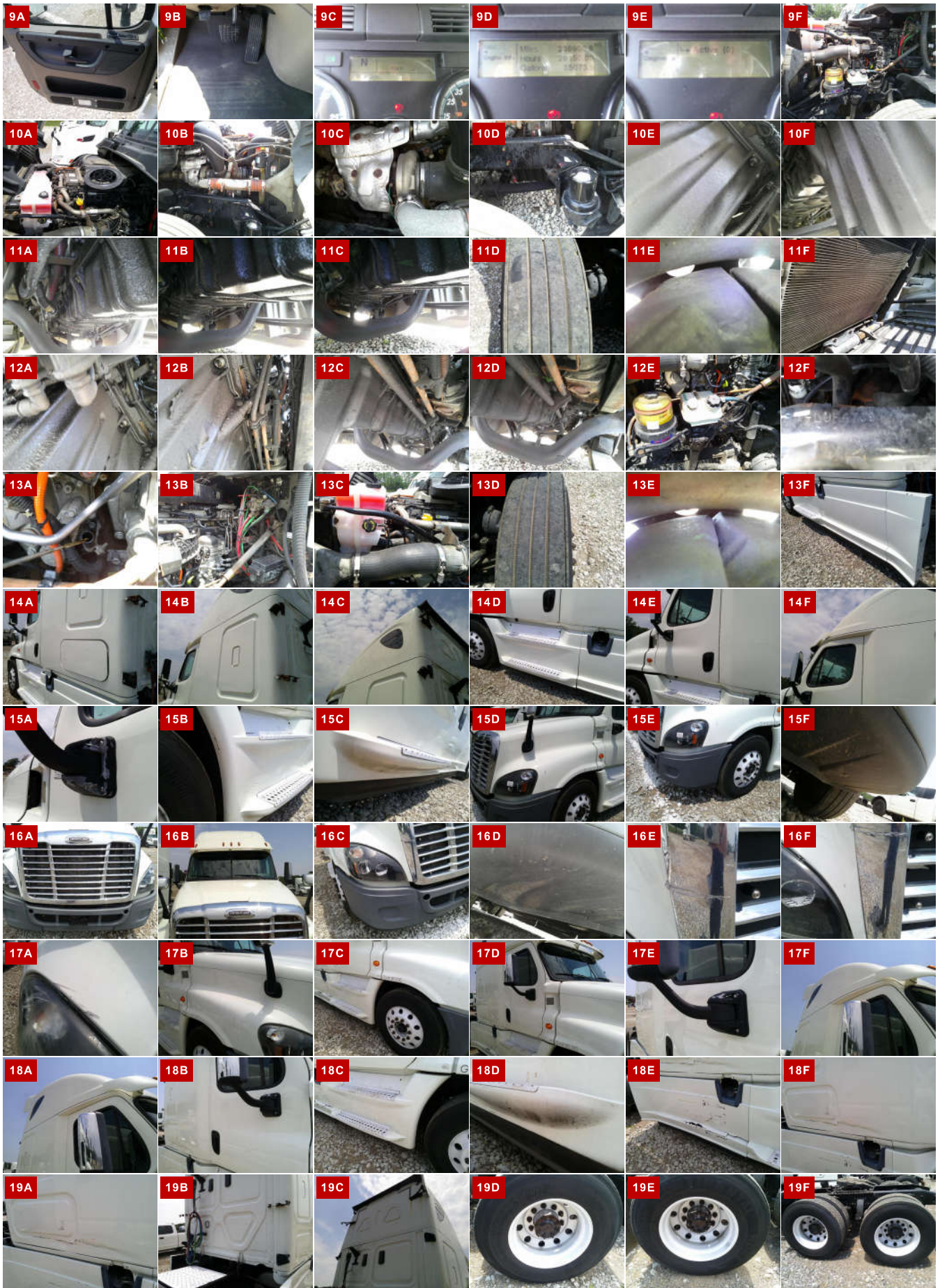
LEAK AT BOTTOM OF BLOCK / OIL PAN.

WEAR & TEAR DETAIL

DIAGNOSTICS	0 ACTIVE, 12 INACTIVE - SEE REPORT
FRONT GRILLE	DAMAGED PLASTIC GRILLE RH SIDE.
FENDER	PASSENGER SIDE LARGE SCRAPE/SCRATCHES ABOVE HEAD LIGHT
PASSENGER SIDE EXTERIOR	DAMAGED FAIRING REAR RH SIDE. HEAVY DAMAGE EXTERIOR SLEEPER RH SIDE.
INTERIOR	DIRTY
TIRES	7 BELOW 10/32'S
HUB COVER	MISSING
CAB EXTENDERS	MISSING BOTH SIDES

REPORT PHOTOS





Condition report only. National Inspection Services does not guarantee mechanical reliability.

© National Inspection Services
101 W. Shrader St. Liberty, MO 64068
www.nationalinspect.com